

JSC-750SED 氣墊式避震器安裝說明

JSC-750SED air mounts installation guide

安裝前，請確認避震器之型號規格是否正確。

Before installation, make sure the model and the specification are correct.



安裝說明

Installation guide

- 進氣口配管時，膠管請塞入附件“阻氣銅塞”缺口朝進氣口。



Insert 'choke copper plug' with the breach facing air inlet inside the plastic tube while installing the pipe for the air inlet.

- 請先將上鐵板固定螺栓移除。

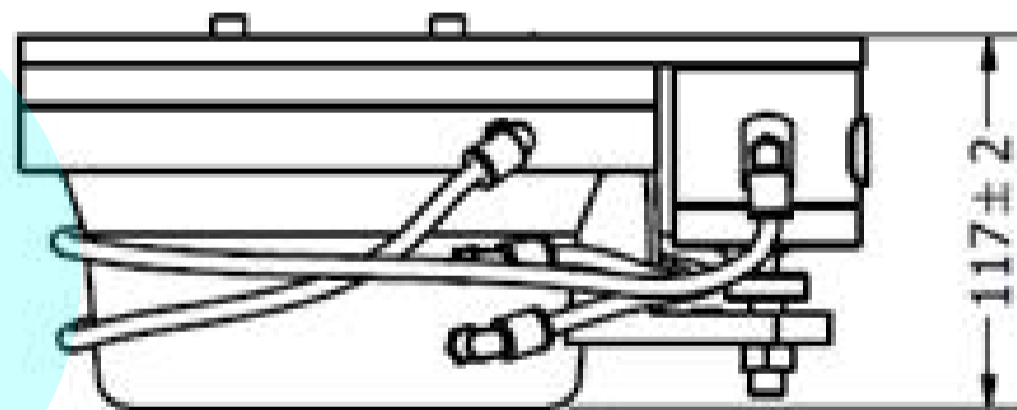
Remove the fixed bolt from the upper iron plate at first.

- 將避震器放置在預定位置上後，將設備鎖固在上鐵板機器固定孔處；再將避震器固定在安裝位置處，注意高度調整閥頂桿需接觸到高度調整螺栓。(參固定孔位圖)

Lock the equipment on the fixed holes of upper iron plate after placing the mounts on the planned location. Afterwards, place the mounts on the installation location and make sure the rod reaches the height adjustment bolt. (fixed hole diagram)

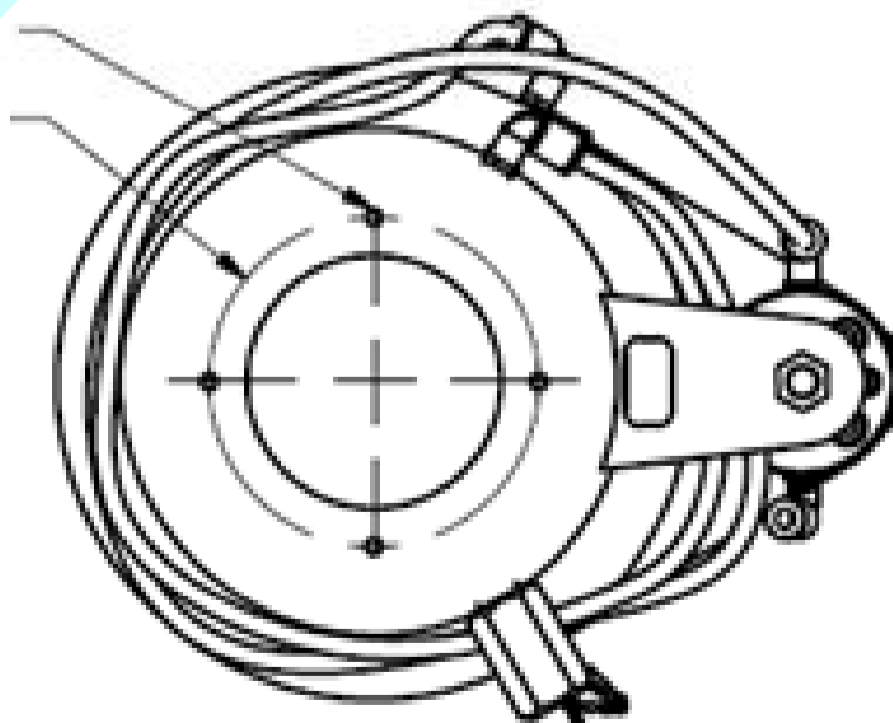
- 安裝完成後，配接氣壓管路(參配管示意圖)。

Install pressure piping after the installation (piping diagram).



避震器固定孔M16
Mounts fixed holes

Φ104.00



固定孔位圖
Fixed hole diagram

JSC-750SED 氣墊式避震器安裝說明

JSC-750SED air mounts installation guide

安裝說明

Installation guide

- 在進氣時，可先將壓力調大等避震器上鐵板上升時，再依荷重調整回

適當內壓，其壓力請勿超過 $4.5\text{kg/cm}^2 = 0.44\text{Mpa}$ 以上，壓力對應荷重請參(表一)。

Increase the pressure during the inflation. Adjust the pressure according to the loading after the upper iron plate arises. The pressure should not be over $4.5\text{kg/cm}^2 = 0.44\text{Mpa}$. Please refer to (table 1) for the loading information.

- 可旋轉高度調整螺栓調整設備高度&水平，調整完畢後請將下方螺母鎖緊。

Rotate the height adjustment bolt to adjust the height and level of the equipment. Lock lower hex nuts after the adjustment.

- 避震器之使用高度範圍為 $125\pm 3\text{ mm}$ 。

Applied height range for the mounts is $125\pm 3\text{ mm}$.

- 緊急洩壓閥可依需要調整洩氣壓力。

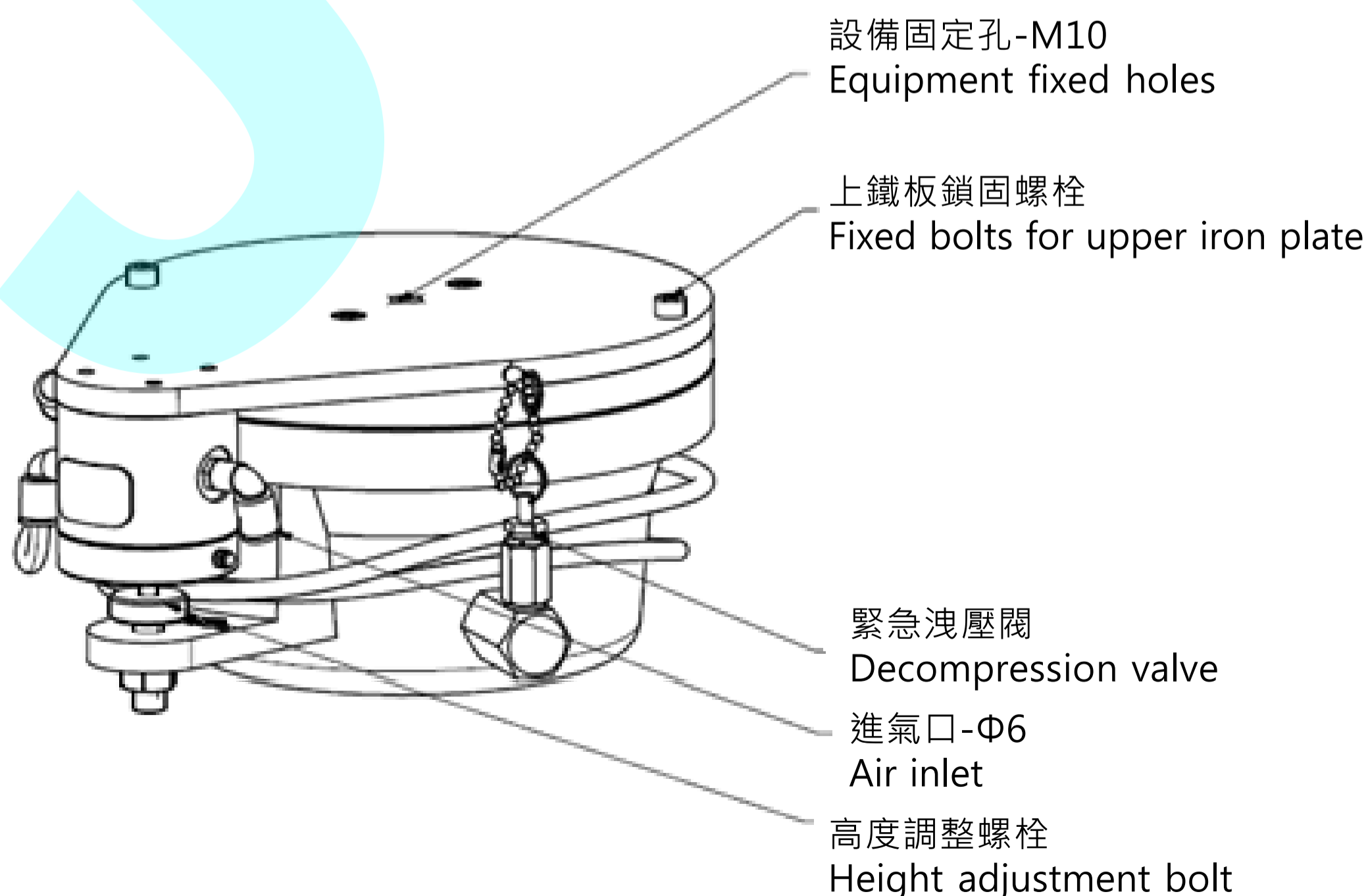
The depletion pressure of the decompression valve can be adjusted if necessary.

- 使用溫度範圍為 $-10\text{ }^{\circ}\text{C}$. $60\text{ }^{\circ}\text{C}$ ，可安裝於室外使用。

Applied temperature range is $-10\text{ }^{\circ}\text{C}$. $60\text{ }^{\circ}\text{C}$ and can be applied outdoor.

- 安裝及使用時，請注意勿傷及氣門嘴及氣墊本體橡膠。

Do not damage the valve and the air cushion rubber during the installation and the application.



注意事項 Notes

※ 安裝時應注意預定位置面是否平整。

Make sure the installation location is smooth.

※ 移動機台時，請先將避震器的氣壓完全放畢。

Deflate the air within the mounts when you move the machine.

※ 避震器安裝完成後，在配管前請先充氣至標準高度。

Inflate to the standard height before conducting the piping engineering.

※ 注意壓力調整閥進氣方向

Pay attention to the inflation direction inside the pressure gauge.

內壓 vs 荷重能力(表一)

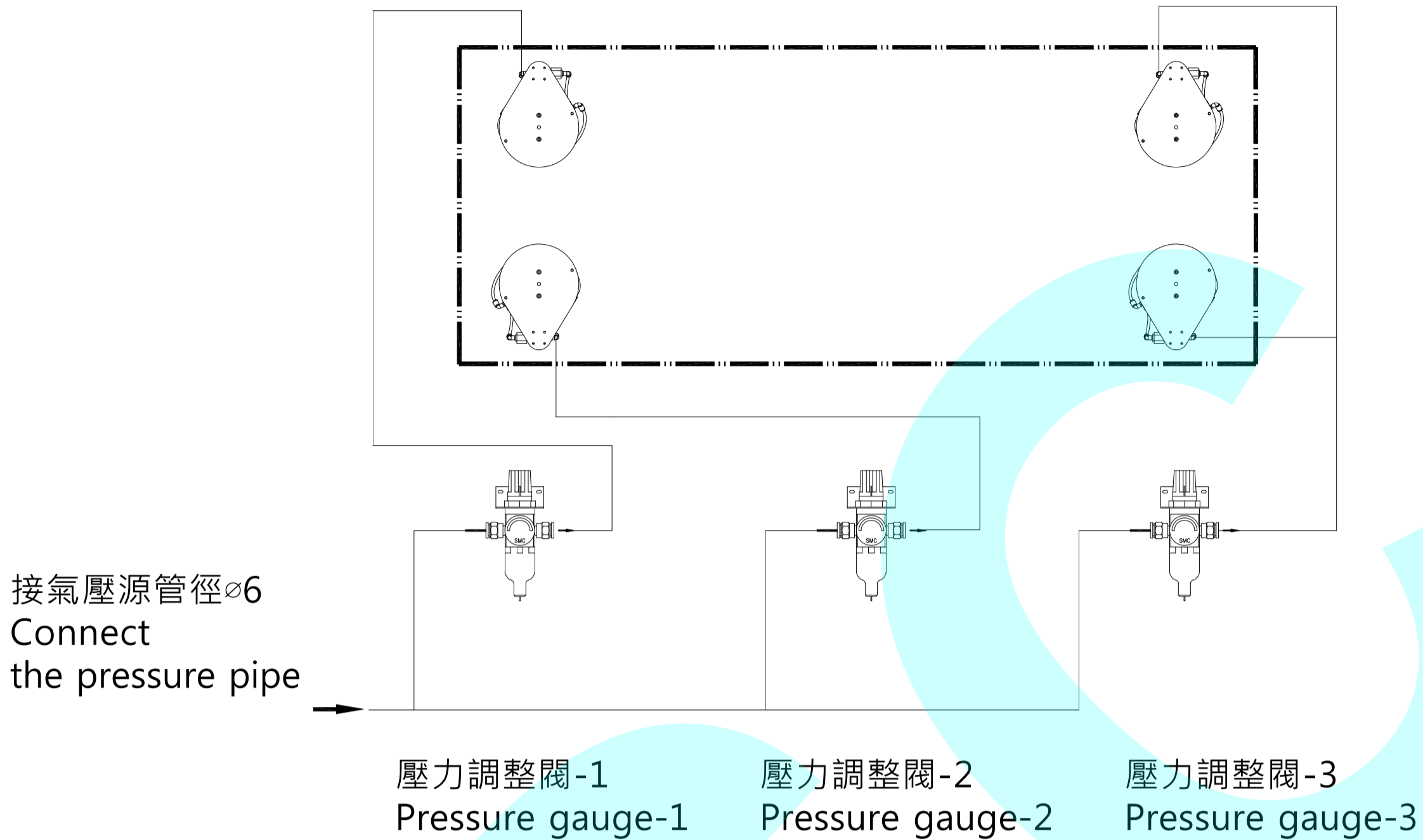
Inner pressure v.s loading capacity (table 1)

內壓(kg/cm ²) Inner pressure	空隙5mm荷重 kg Gap 5mm loading (kg)	空隙10mm荷重 kg Gap 10mm loading (kg)
0.5	67	64
1	172	163
1.5	242	230
2	315	299
2.5	394	374
3	500	475
3.5	580	551
4	680	646
4.5	768	730
5	850	808

JSC-750SED 氣墊式避震器圖解說明
 JSC-750SED Air mounts illustration

4支點 配管示意圖

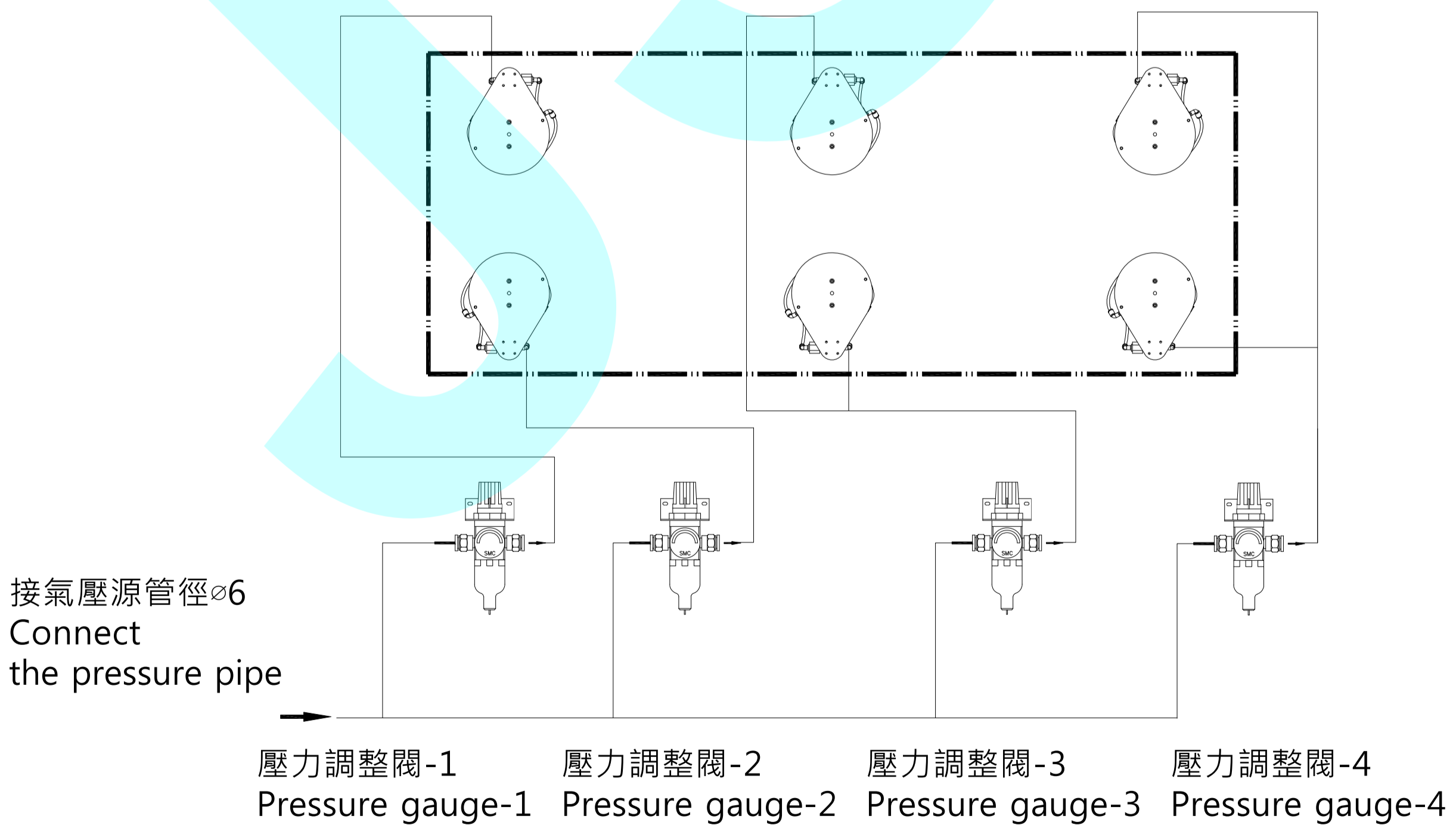
4 Pipework diagram



避震器荷重相同狀態下,可只使用1組壓力調整閥
 Apply 1 set of pressure gauge for the same loading mounts.

6支點 配管示意圖

6 Pipework diagram



配合壓力調整閥-3之避震器需將高度調整閥拆除
 Remove the height adjustment valve to operate pressure gauge-3.