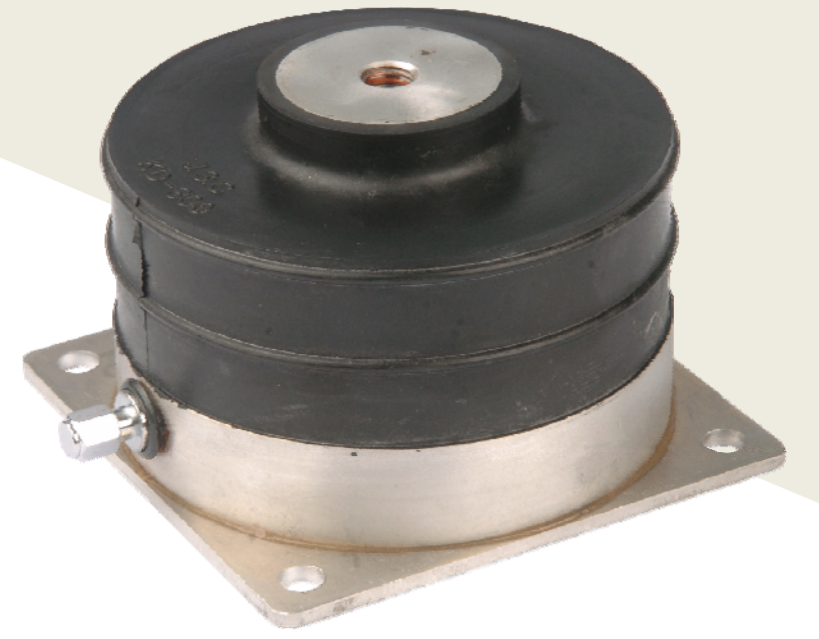


# JSC-SD 氣墊式避震器安裝說明

## JSC-SD air mounts installation guide

安裝前，請確認避震器之型號規格是否正確。

Before installation, make sure the model and the specification are correct.



### 安裝說明

### Installation guide

- 所需工具：開口扳手、打氣筒、壓力表、爪式千斤頂。(如圖1)

Required tools: Open wrench, air pump, pressure gauge, and claw jack (Fig 1).

- 在無荷重狀態時，氣墊式避震器內請勿充氣。

Do not inflate the air mounts without loading.

- 將設備放置在臨時木台或頂高裝置上(高度約氣墊自然高度H)。(如圖2)

Place the equipment on the wooden panel or the elevation equipment (same height as air cushion) (Fig 2).

- 依序將氣墊式避震器置入設備安裝位置，並以螺栓固定之。(如圖3)

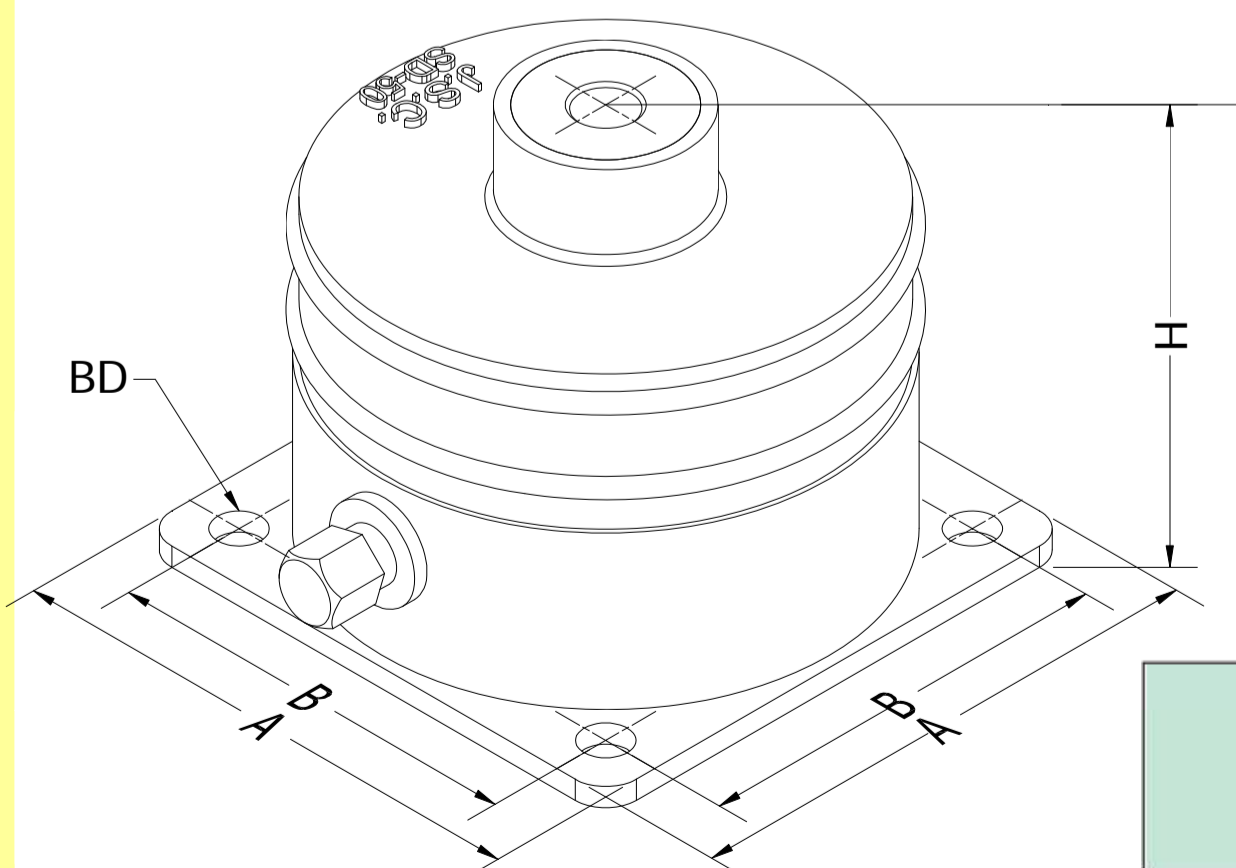
Install the air mounts on the equipment in order and lock them (Fig 3).

- 將設備與避震器固定。(如圖4)

Fasten the equipment and the mounts (Fig 4).

- 充氣時，以空壓機或腳踏式充氣筒即可充氣，避震器內壓過高時；按下氣門嘴即可放氣，充氣完成後將臨時木台取出或頂高裝置降低。(如圖5)

Inflate with compressor or pedal pump. When the pressure is too high inside the mounts, press the valve to deflate. Take out the wooden panel or lower the elevation equipment after inflation (Fig 5).



型號	尺寸 (mm)				荷重 (Kgs)		固定螺栓 CS
	A	B	H	φ BD	Min	Max	
JSC-50-SD	76	60	64	7	30	50	M10-40L
JSC-150-SD	110	89	88	7	60	150	M12-50L
JSC-300-SD	130	108	88	8	150	210	M12-50L

# JSC-SD 氣墊式避震器安裝說明

## JSC-SD air mounts installation guide

### 安裝說明

### Installation guide

- 氣門嘴為CNS TV-8標準螺紋。

The Valve applies standard CNS TV-8 thread.

- 最大使用內壓為 $4.5\text{kg/cm}^2 = 0.44\text{Mpa}$ ，但充氣時以避震器高度為調整基準。(高度為氣墊浮高 $3\sim 5\text{mm}$ )

Maximum inner pressure is  $4.5\text{kg/cm}^2 = 0.44\text{Mpa}$ . Apply the height of the mounts ( $3\sim 5\text{mm}$  of air cushion) as the adjustment standard while inflating.

- 以水平尺檢查設備的水平度，並以充氣及放氣來調整水平。(如圖6)

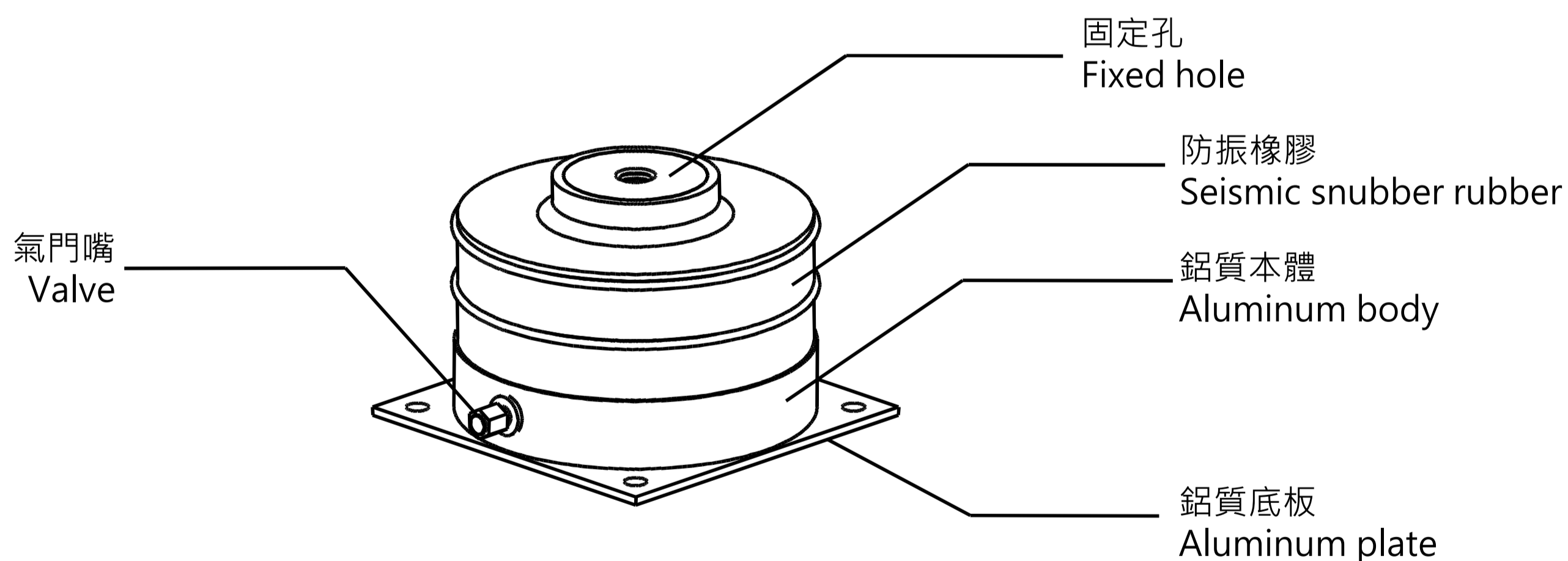
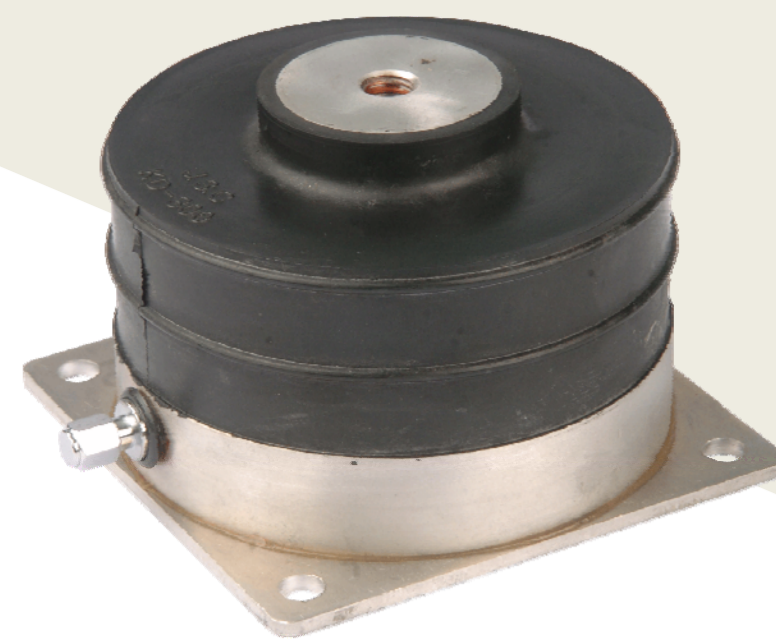
Check the level with level bar and adjust it with inflation and deflation (Fig 6).

- 使用溫度範圍為  $-10\text{ }^{\circ}\text{C} \sim 60\text{ }^{\circ}\text{C}$ 。

Applied temperature range is between  $-10\text{ }^{\circ}\text{C} \sim 60\text{ }^{\circ}\text{C}$ .

- 安裝及使用時，請注意勿傷及氣門嘴及氣墊本體橡膠。

Do not damage the valve and the air cushion rubber during the installation and the application.



※保養點檢項目：每月觀察避震器高度是否正常、適時充氣維持氣墊內壓；保持避震器安裝狀態正常。

Maintenance checking points: check the height of the mounts, remain the inner pressure inside the air cushion by necessary inflation, and maintain the installation of the mounts monthly.

※移動設備前，請先按下氣門嘴將氣墊放氣；以免造成氣墊損壞。

Deflate the air through the valve to avoid the damage before moving the equipment.

# JSC-SD 氣墊式避震器圖解說明

## JSC-SD Air mounts illustration



圖1)需要工具：爪式千斤頂、水平尺、扳手、壓力錶、打氣筒。

Fig 1) Required tools: claw jack, level bar, open wrench, pressure gauge, and air pump.

圖2)將設備放置在臨時木台或頂高裝置上 (高度約氣墊自然高度H)。

Fig 2) Place the equipment on the wooden panel or the elevation equipment (same height as air cushion).

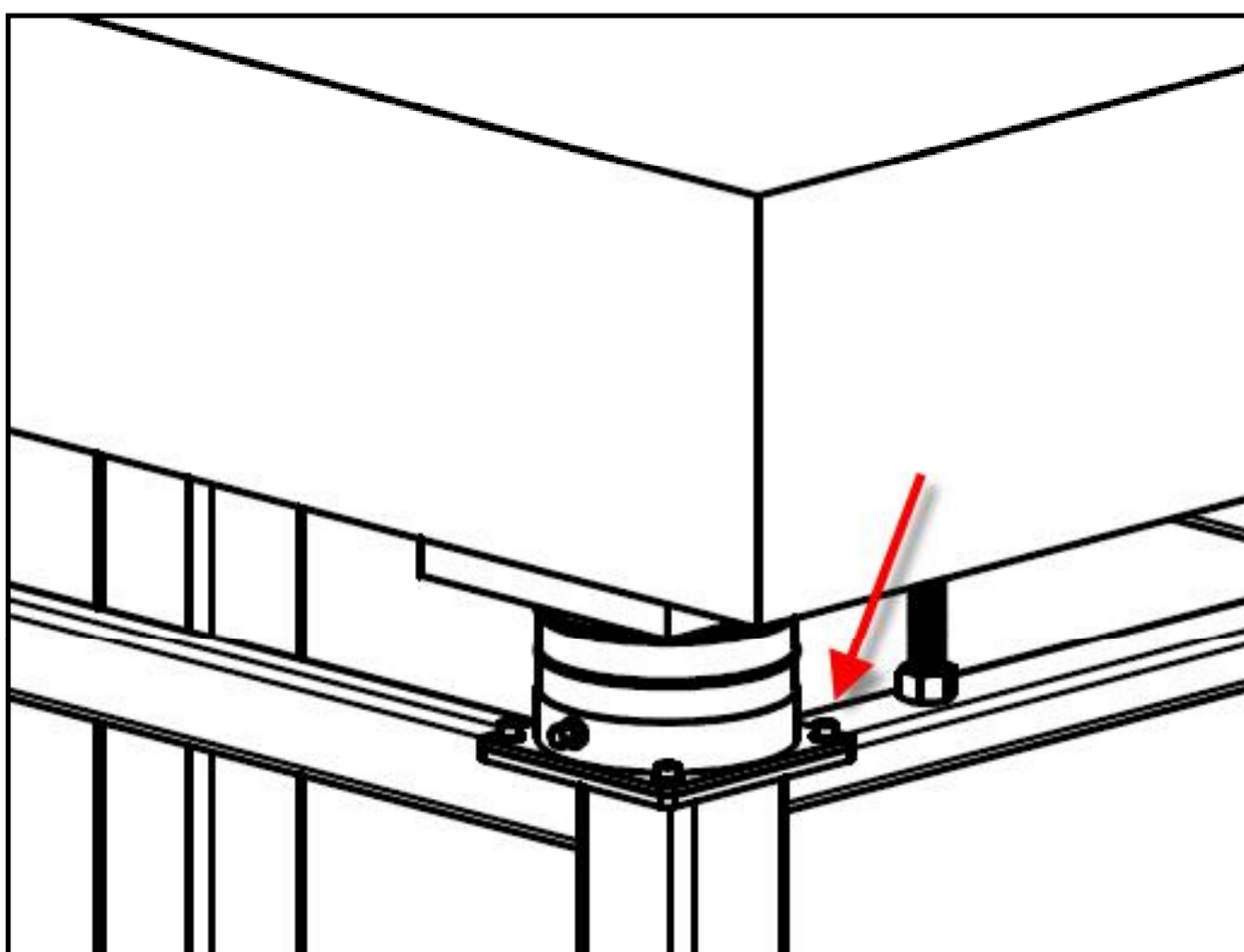
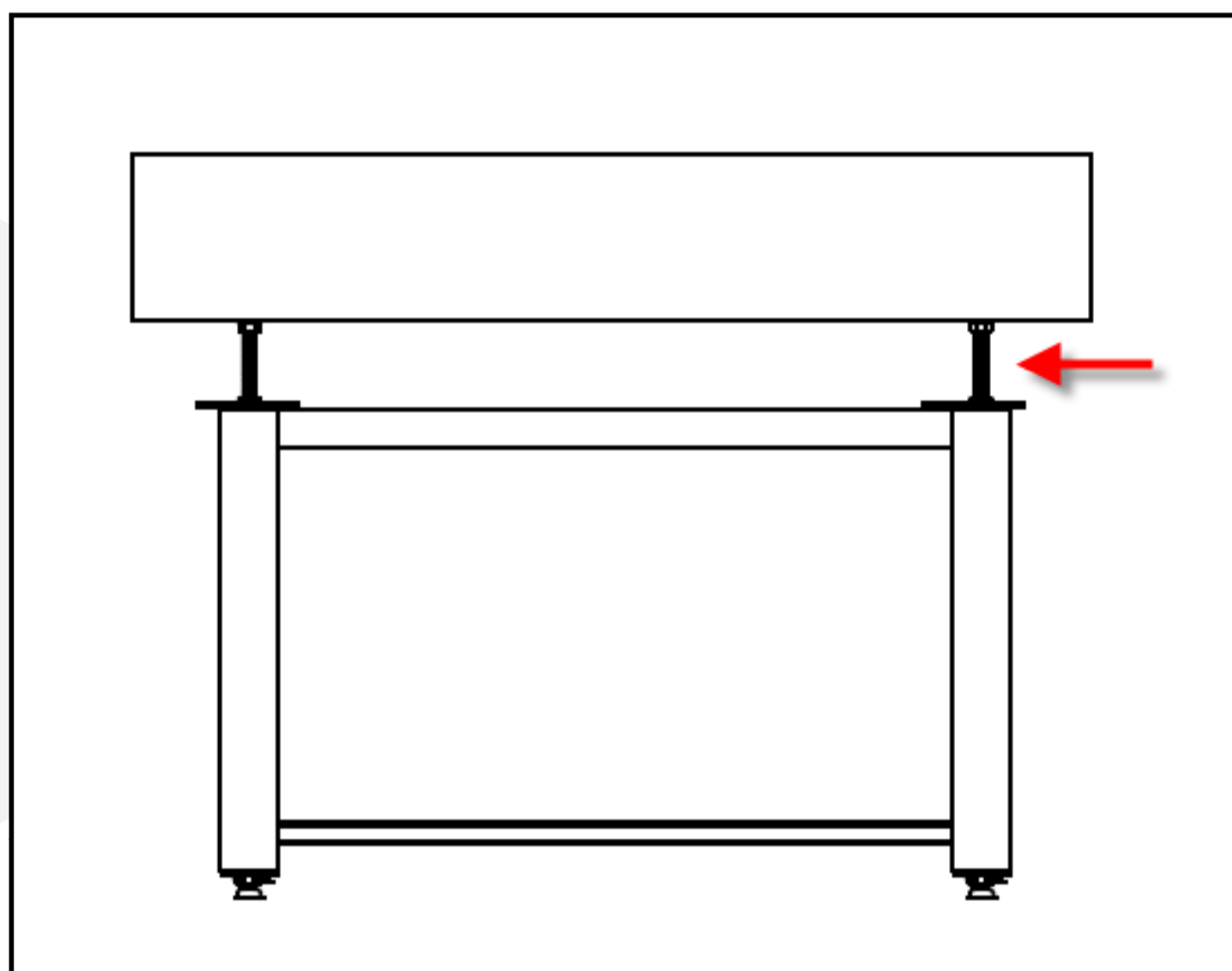


圖3)依序將氣墊式避震器置入設備安裝位置，並以螺栓固定之。

Fig 3) Install the air mounts on the equipment in order and lock them.

JSC-SD 氣墊式避震器圖解說明  
JSC-SD Air mounts illustration

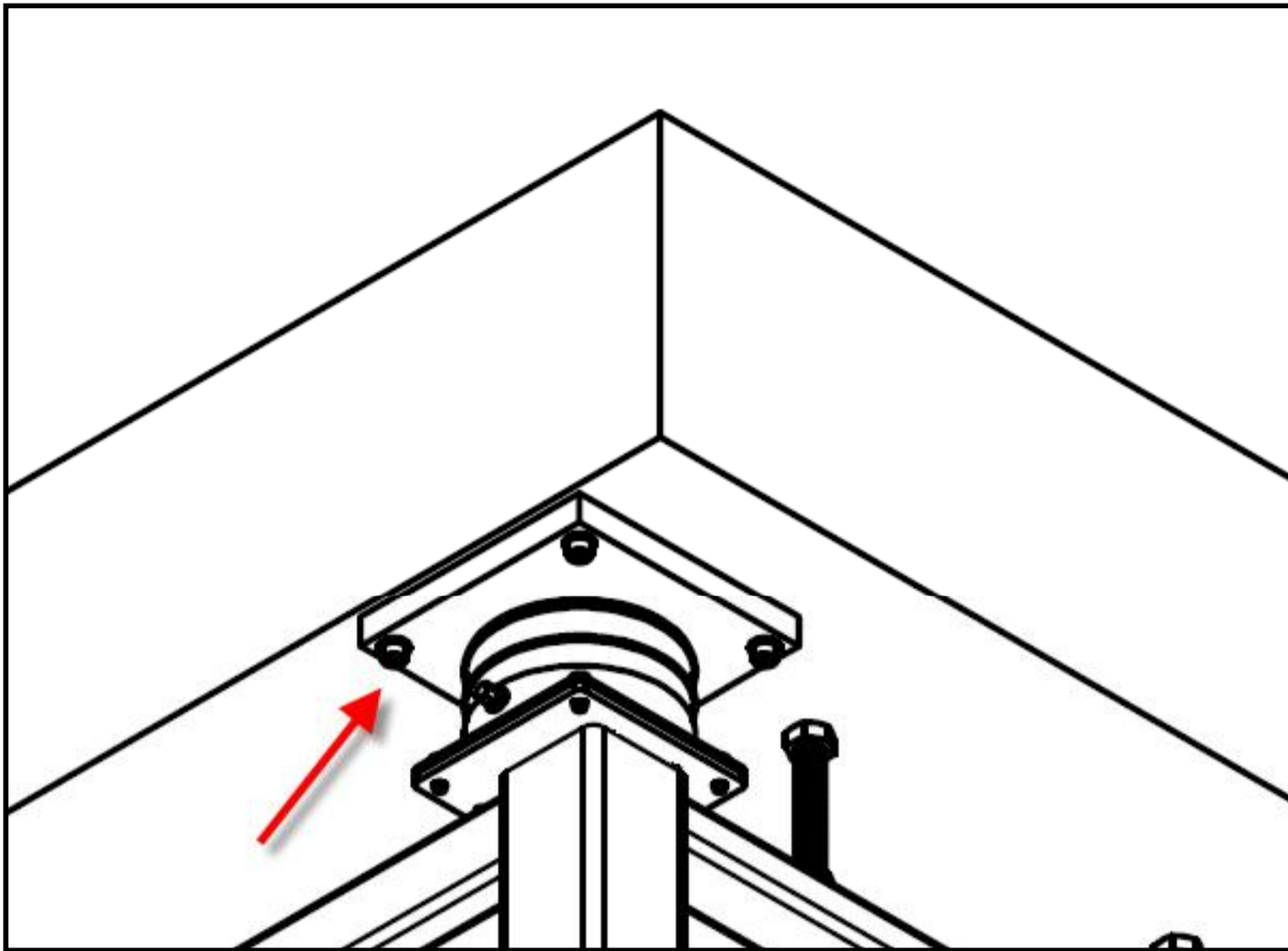


圖4)將設備與避震器固定。

Fig 4) Fasten the equipment and the mounts.

圖5)使用打氣筒打氣至避震器，最大使用內壓為  $4.5\text{kg/cm}^2 = 0.44\text{Mpa}$ ；(高度為氣墊浮高  $3\sim 5\text{mm}$ ) 此時充氣完成後完成後；將臨時木台取出或頂高裝置降低。

Fig 5) Inflate with air pump. Maximum inner pressure is  $4.5\text{kg/cm}^2 = 0.44\text{Mpa}$ . Take out the wooden panel or lower the elevation equipment after inflation.

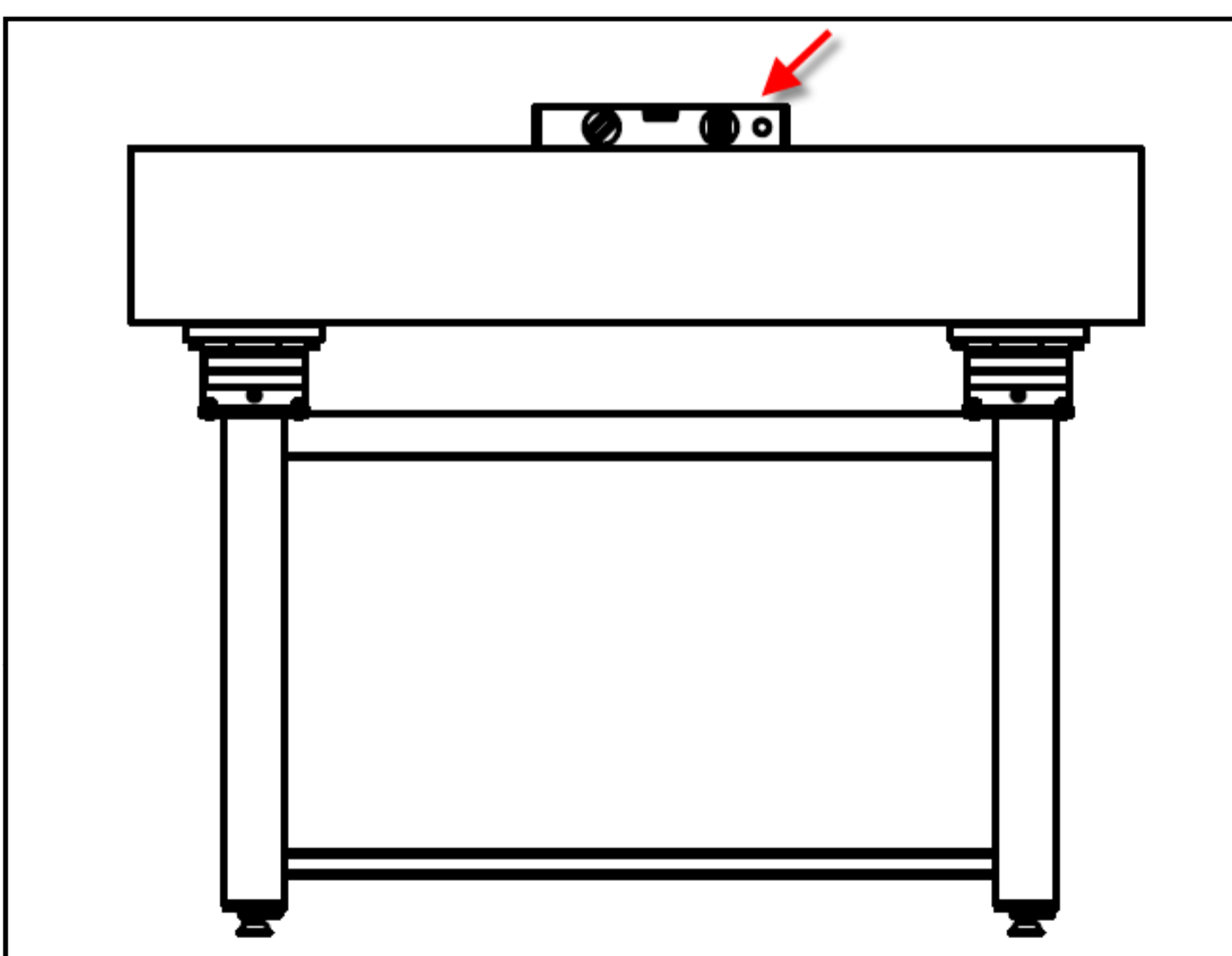
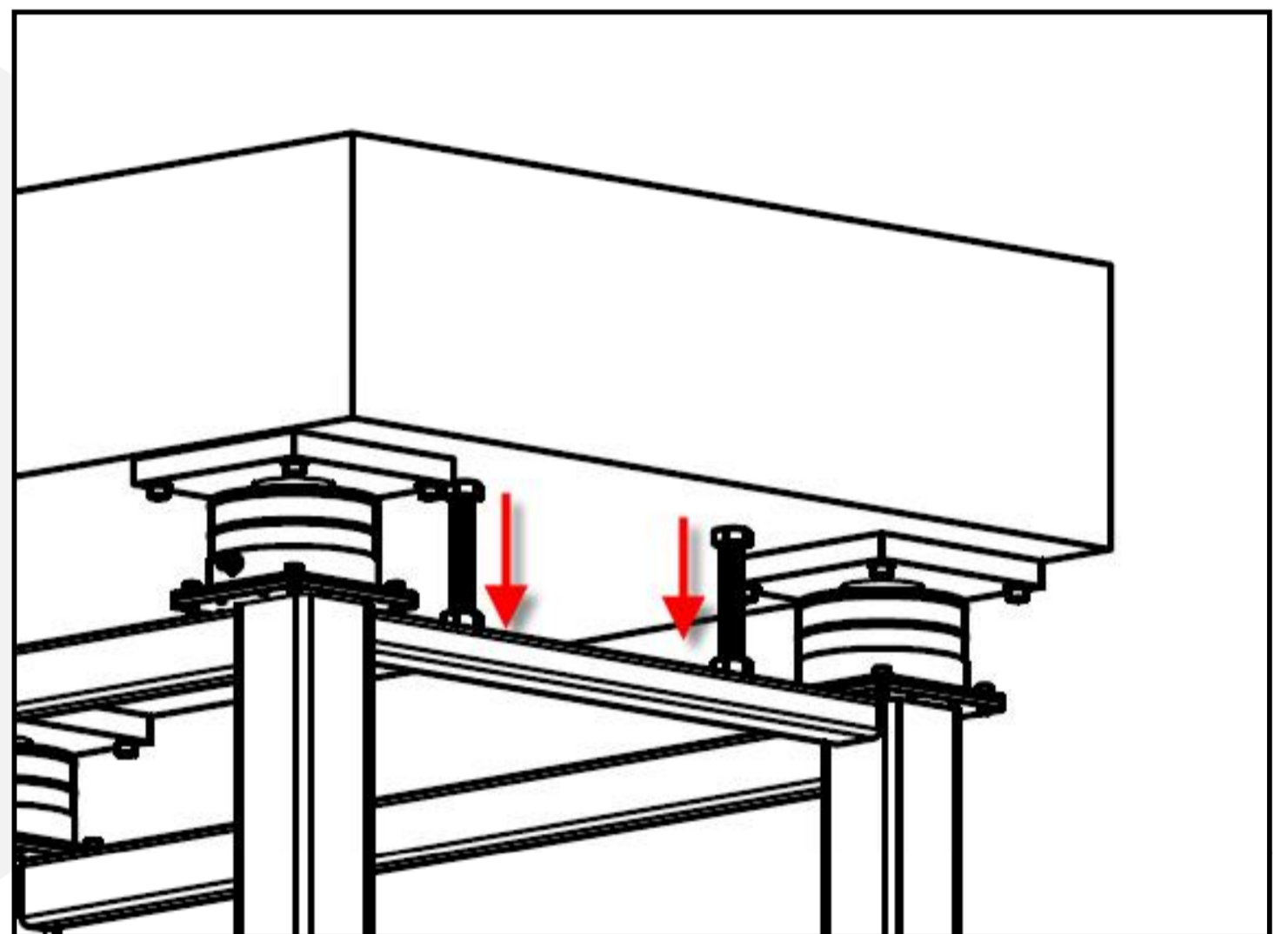


圖6)利用水平尺檢視設備水平。

Fig 6) Check the level with level bar.