

JKS 型彈簧式避震器安裝說明

JKS spring isolator installation guide

安裝前，請確認避震器之型號規格是否正確。

Before installation, make sure the model and the specification are correct.

安裝說明

Installation guide

- 所需工具：公制口徑19mm (M12) 開口扳手、爪式千斤頂。

Required tools: 19mm (M12) open wrench and claw jack.

- 可先行放置與避震器高度相同的臨時木台於設備安裝處，再安裝設備。(如圖1)

Place the wooden panel with the same height as the mounts on the installation location before installing (Fig 1).

- 依據基礎螺栓固定孔的位置，於安裝位置預埋基礎螺栓。

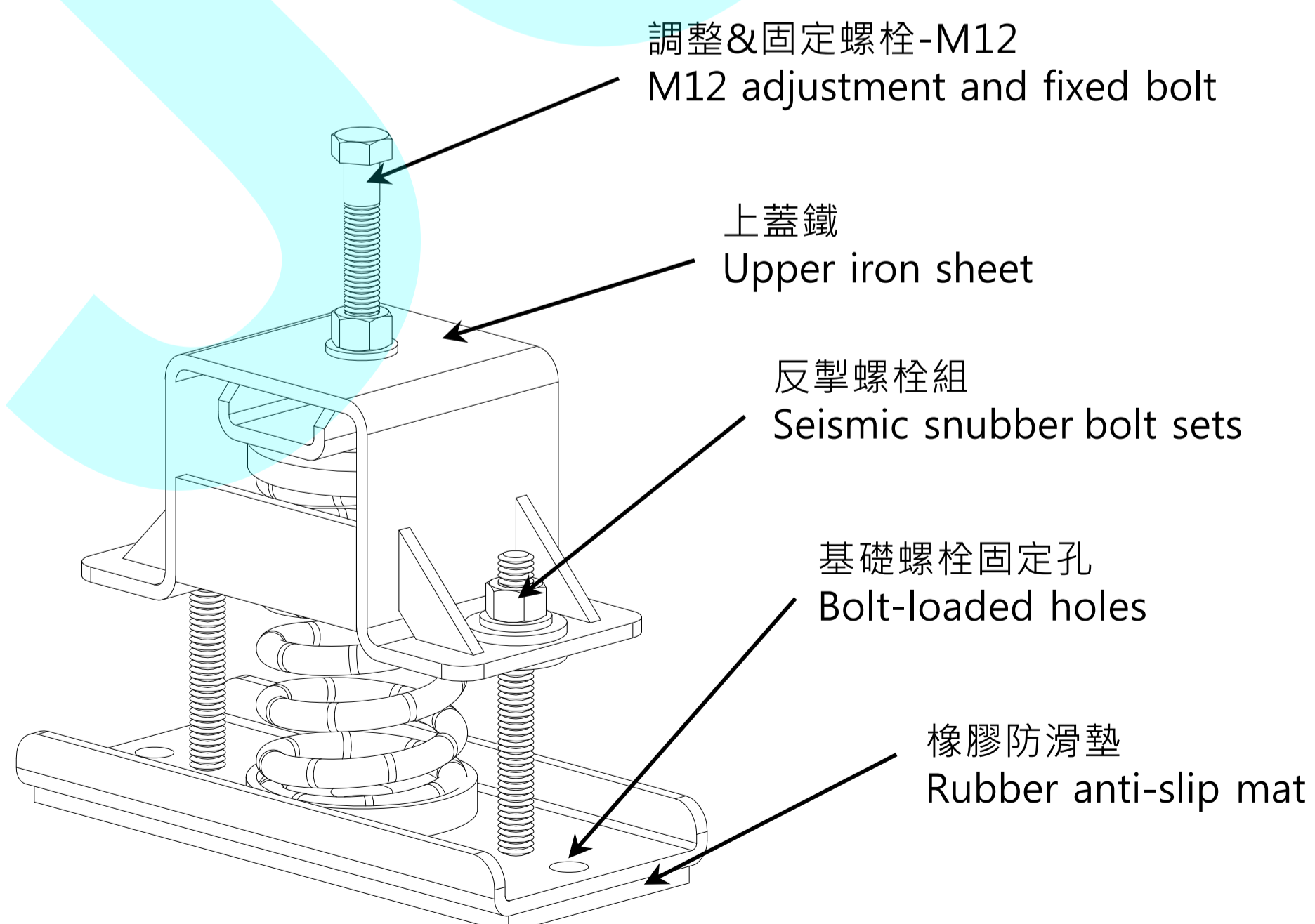
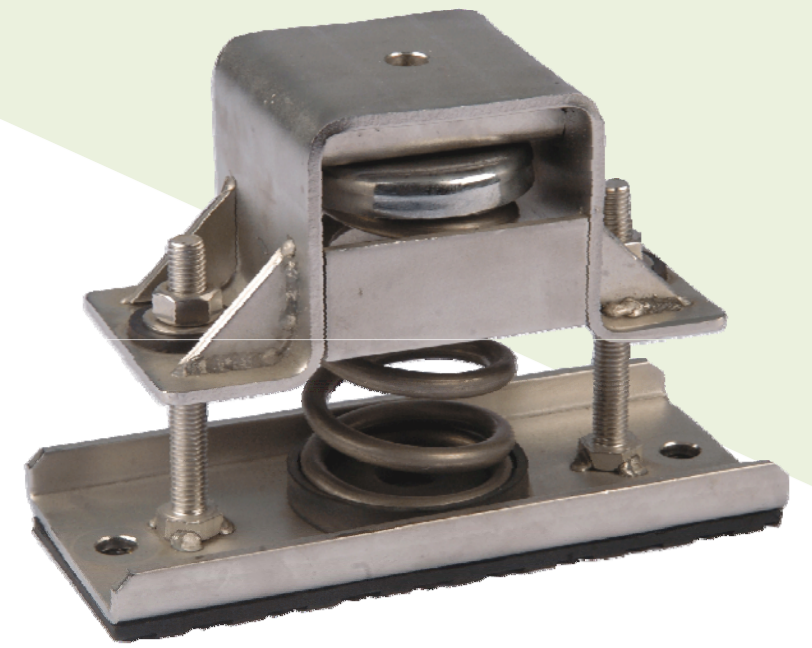
Embed foundation bolts according to the location of bolt-loaded holes.

- 將避震器放置於與設備的正確安裝位置。(如圖2)

Place the mounts on the correct installation location (Fig 2).

- 以M12固定螺栓將避震器與設備固定，但不鎖緊。(如圖3)

Fasten the mounts and the equipment with M12 fixed bolt without locking them (Fig 3).



JKS 型彈簧式避震器安裝說明 JKS spring isolator installation guide

- 使用公制口徑19mm開手扳手以順時針方向調整螺帽使彈簧受力下壓。(如圖4)

Adjust the adjustment nuts in the clockwise direction with 19mm open wrench to press down the spring (Fig 4).

- 調整至避震器上蓋鐵上升，臨時木台可取出時即可停止調整。(如圖5)

Adjust until the upper iron sheet of the mounts arises. Adjustment can be stopped once the wooden panel is Removed (Fig 5).

- 將M12固定螺栓確實與設備鎖緊，即完成避震器之安裝調整。(如圖6)

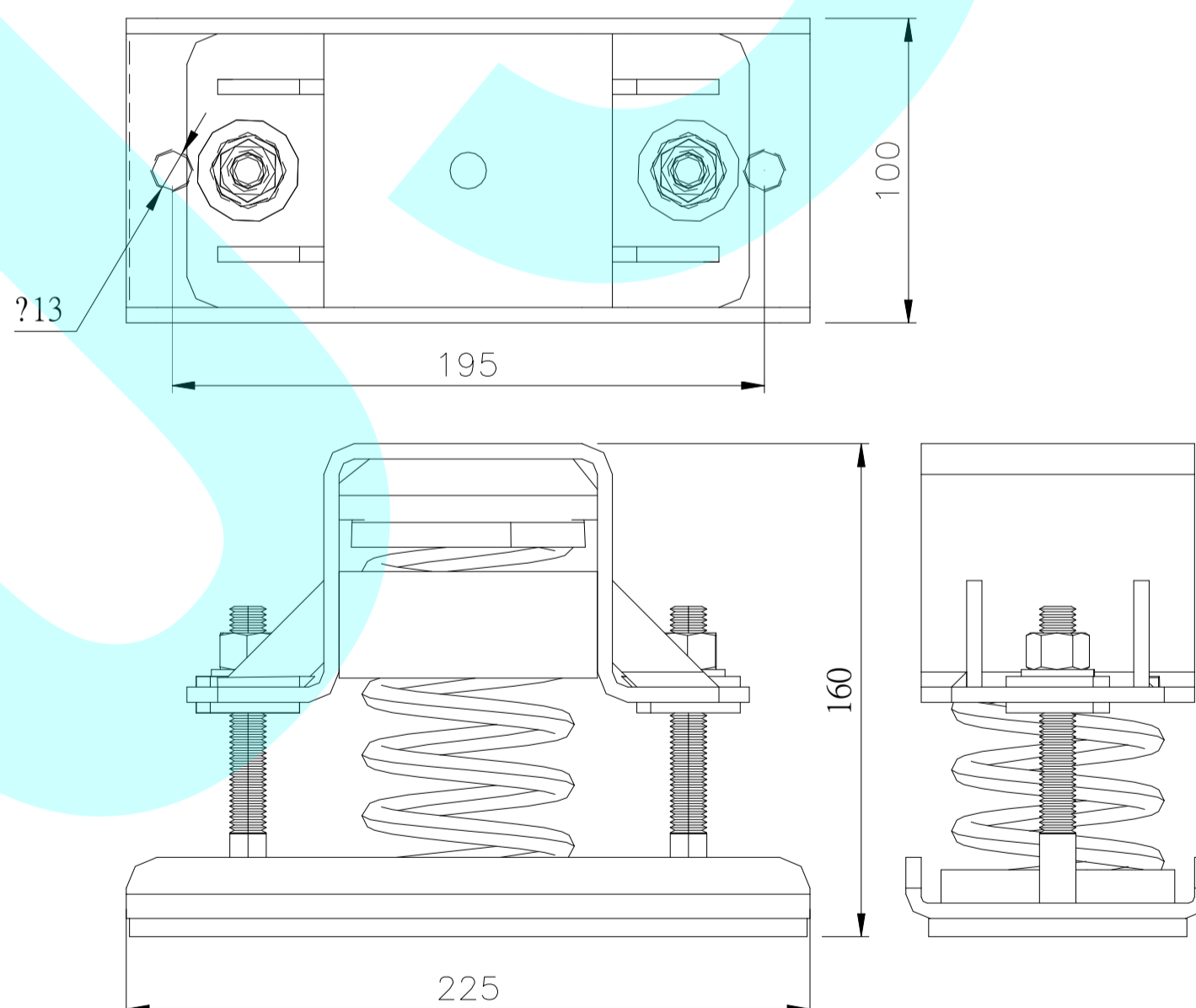
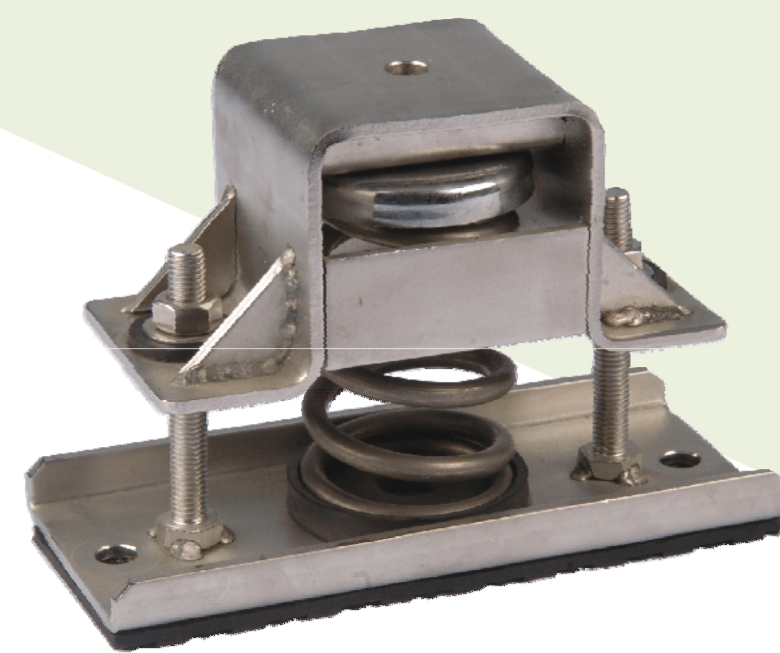
After the adjustment, lock the mounts with M12 fixed bolt (Fig 6).

- 安裝後請檢查彈簧之下壓量，安裝完成後之避震器高度若低於51mm，應予更換較大荷重之規格，並請洽本公司業務人員。

After the adjustment, check the press amount of the spring. If it appears with insufficient loading, please replace with bigger loading by contacting our staff.

- 安裝時，請注意安全。

Be cautious during the installation.



※保養點檢項目：每月觀察固定螺栓保持鎖固、保持避震器安裝狀態 &彈簧下壓撓度正常。

Maintenance checking points: remain fixed bolt locked, balance of the base, installation of the isolator, and the deflection of the spring every month.

JKS 型彈簧式避震器圖解說明 JKS spring isolator illustration

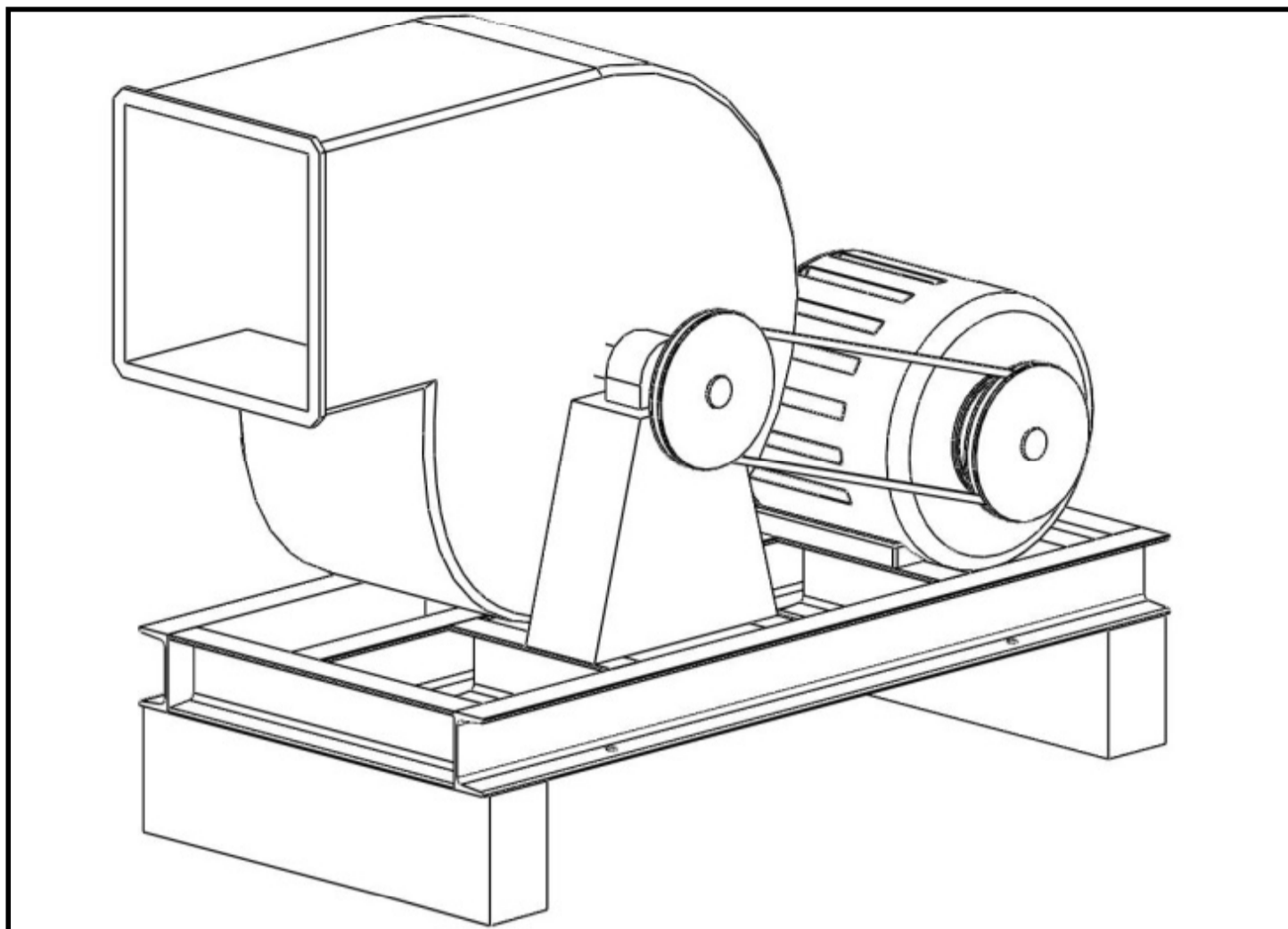


圖1) 安裝設備時可先放置與避震器相同高度之臨時木台。

Fig 1) Place the wooden panel with the same height as the mounts at the installation before installing.

圖2) 將避震器置入設備預定安裝位置處。

Fig 2) Place the mounts on the correct installation location.

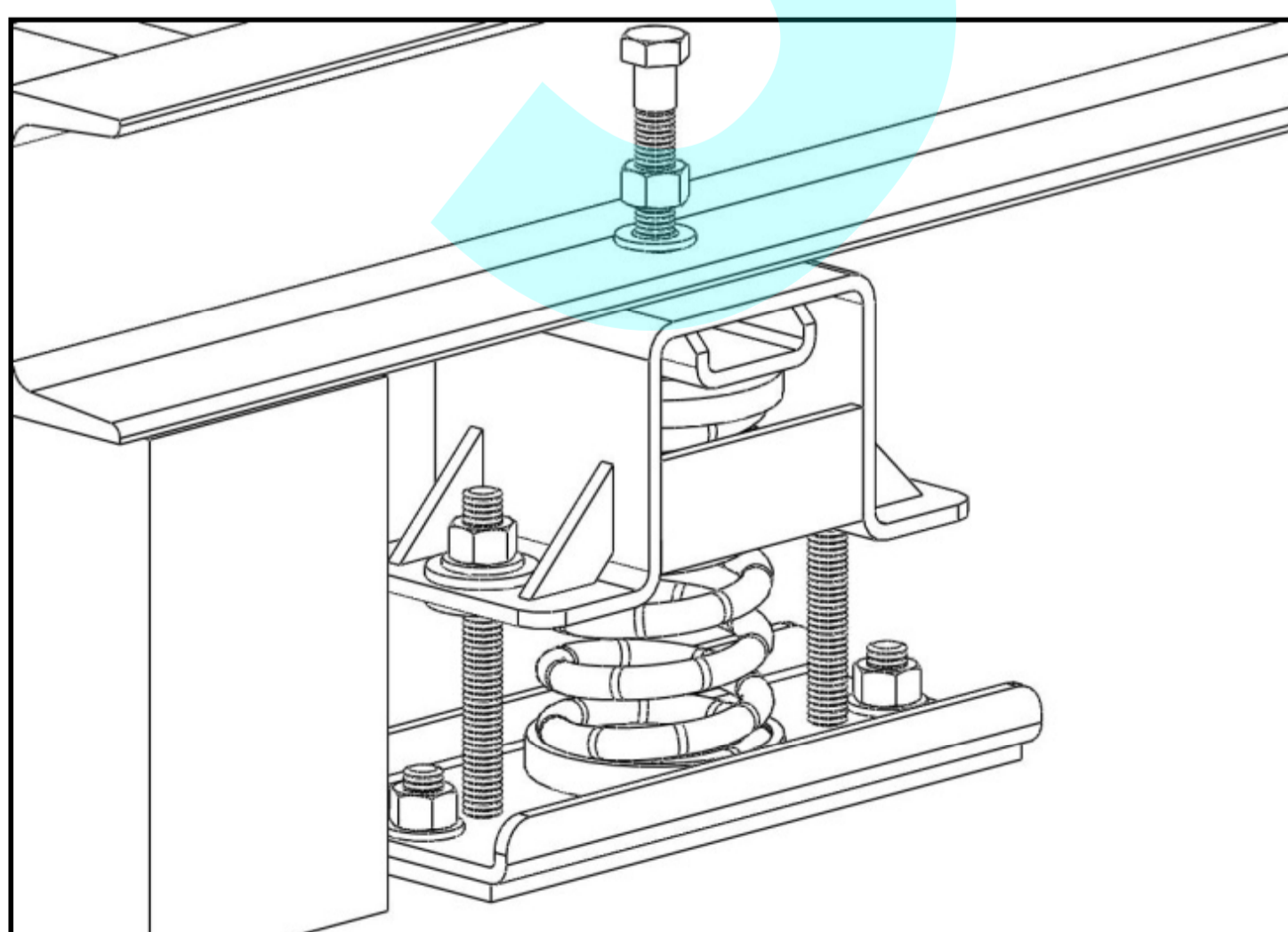
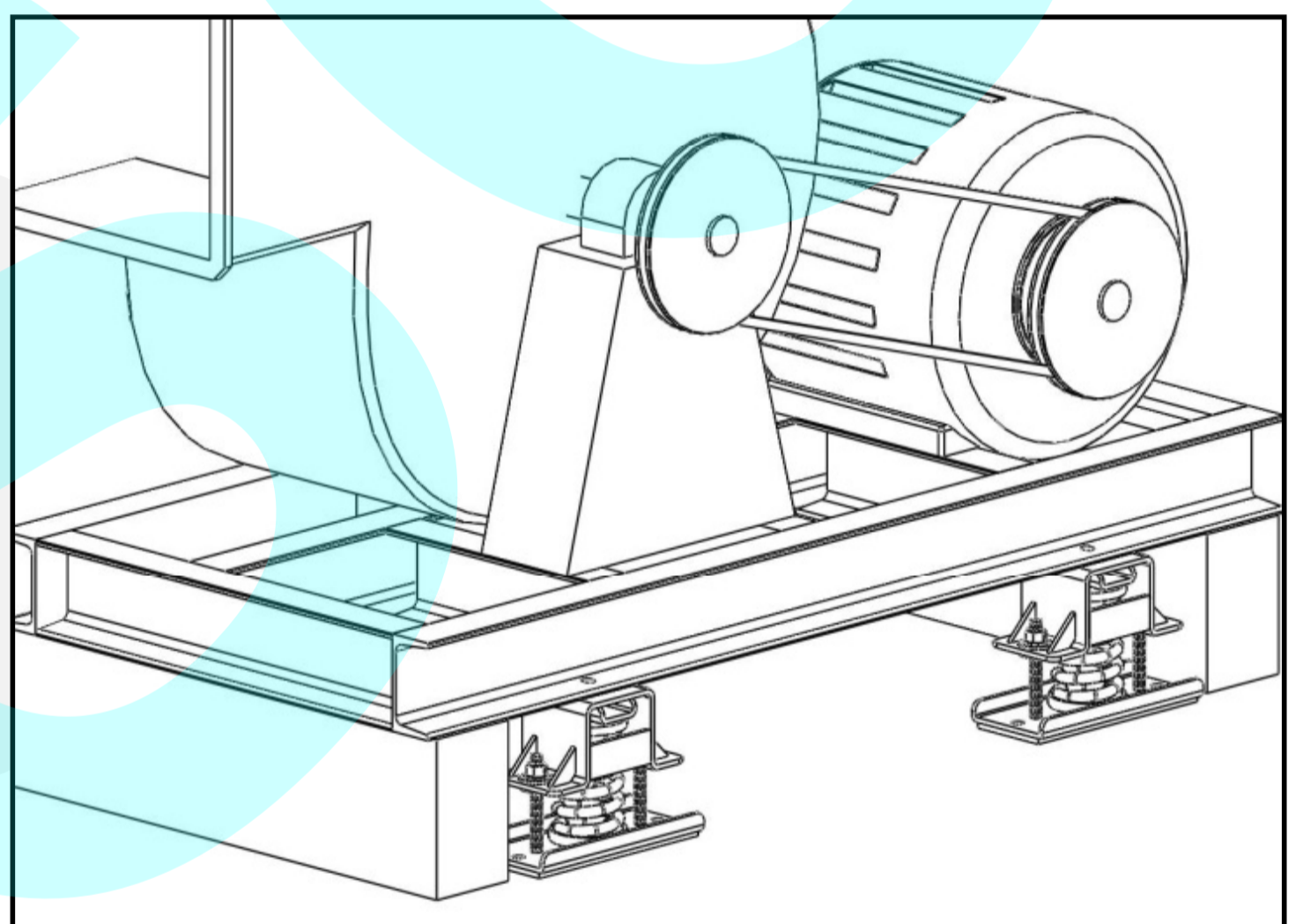


圖3) M12固定螺栓將避震器與基座固定，但不鎖緊。同時以基礎螺栓將避震器固定。

Fig 3) Fasten the mounts on the base with M12 bolts without locking it. Apply foundation bolts to fix the mounts.

JKS 型彈簧式避震器圖解說明 JKS spring isolator illustration

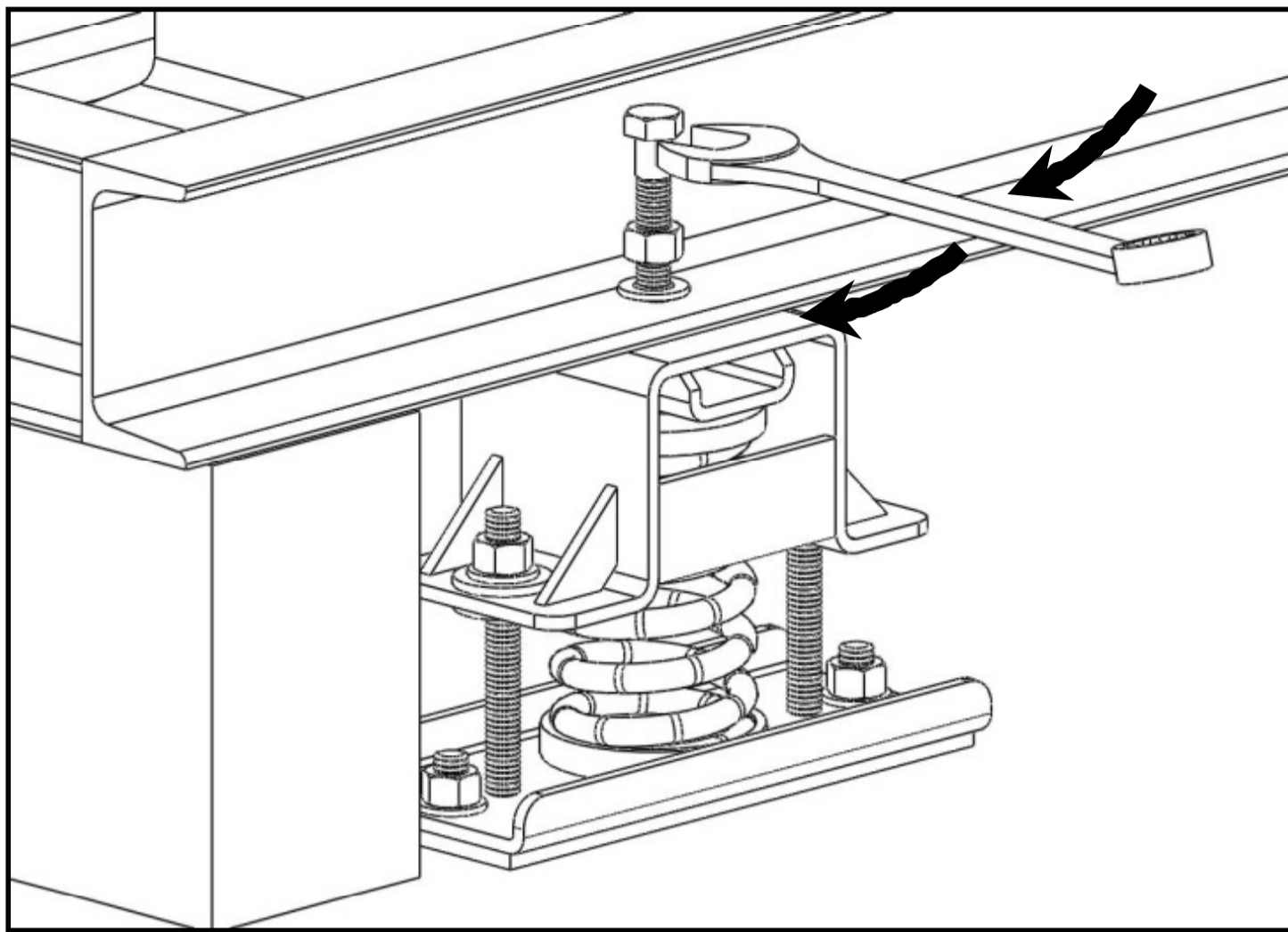


圖4) 使用公制口徑19mm板手以順時針方向調整螺栓，使彈簧下壓。

Fig 4) Adjust the adjustment bolts in the clockwise direction with 19mm open wrench to press down the spring.

圖5) 調整至彈簧下壓及避震器上蓋鐵昇高，木台可以取出時即可完成調整。

Fig 5) Adjust until the spring is down and the upper iron sheet of the mounts arises. Adjustment can be stopped once the wooden panel is removed.

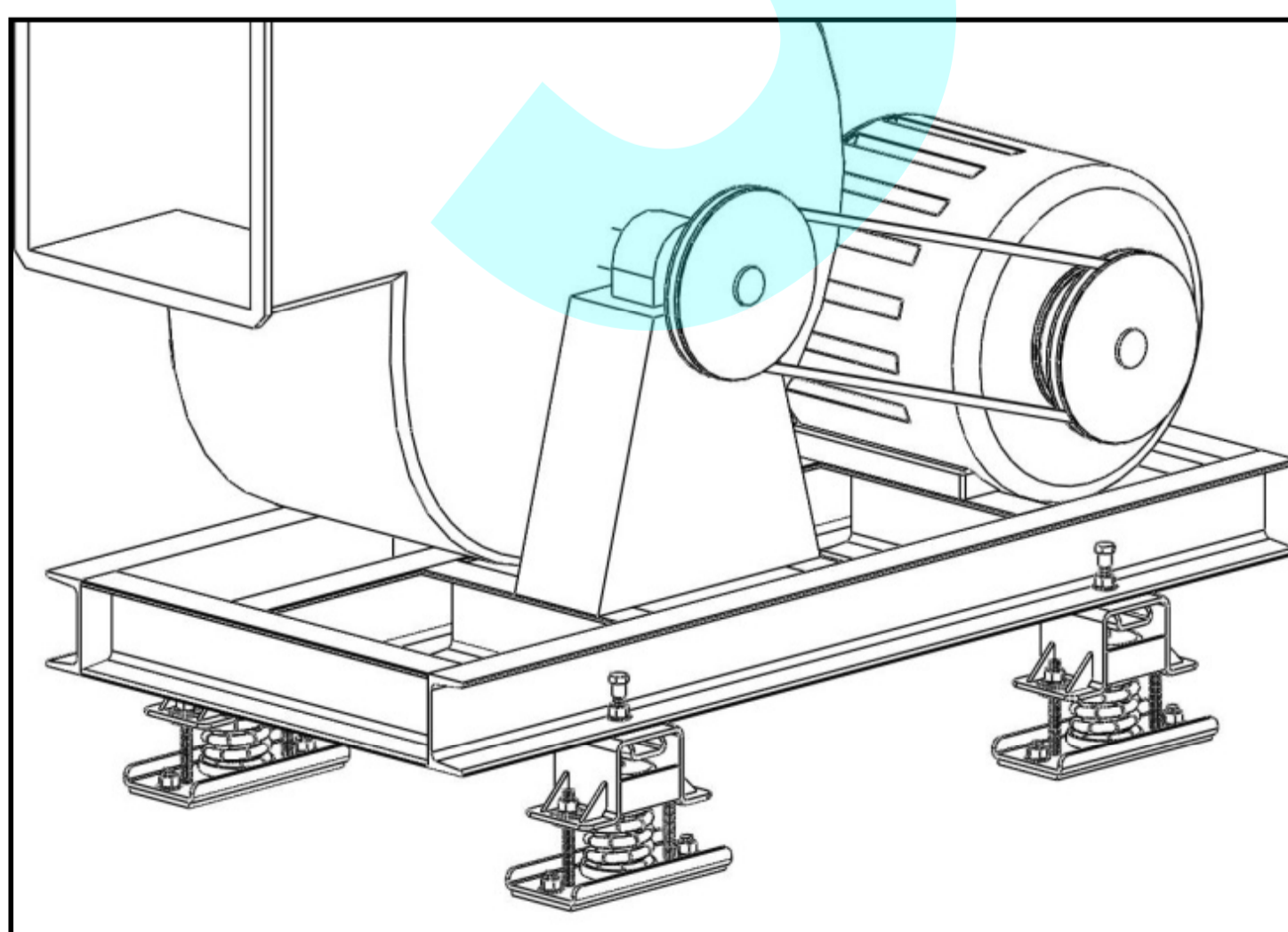
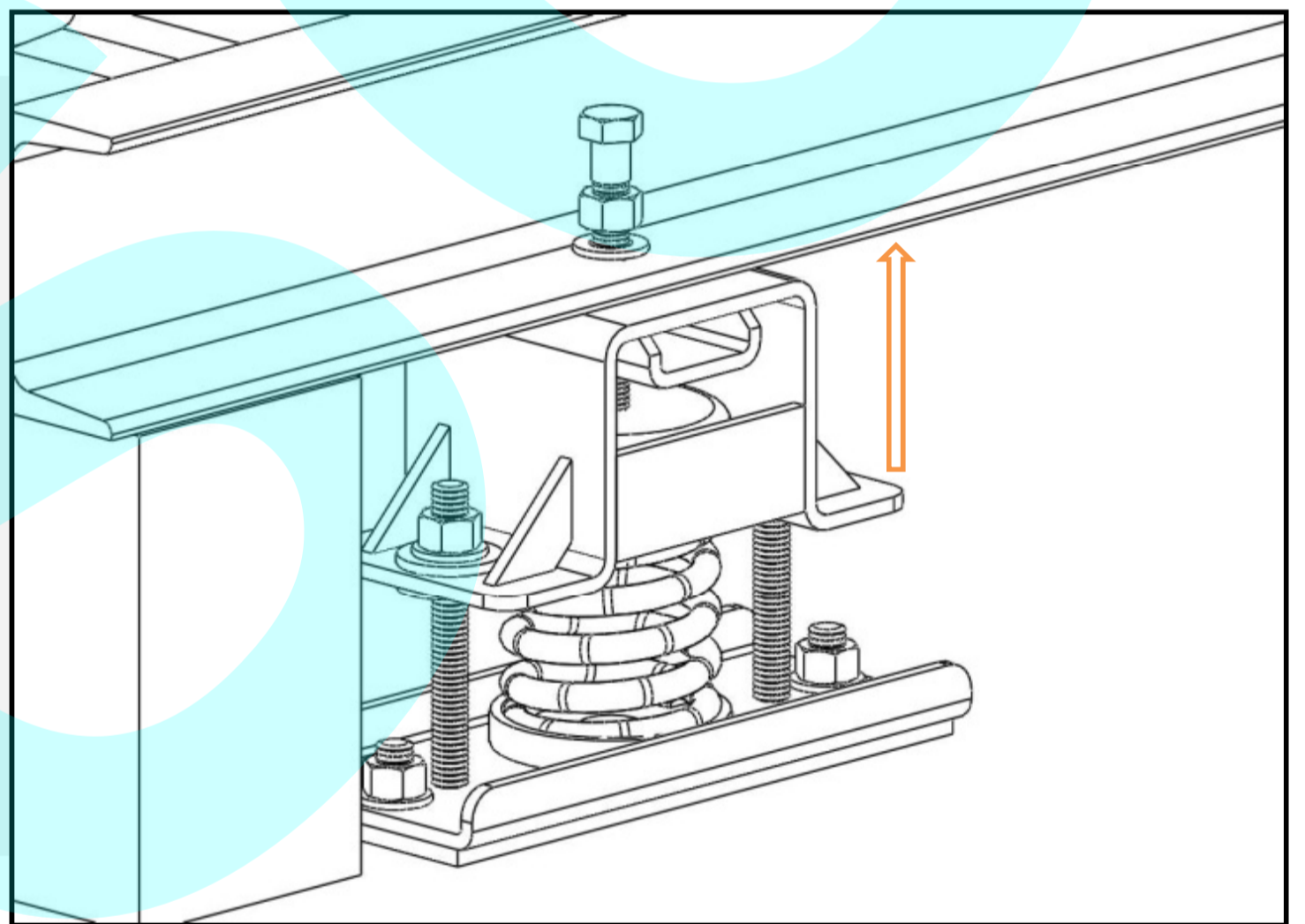


圖6) 將M12螺栓與設備完全鎖緊後，即完成避震器安裝調整。

Fig 6) After the adjustment, lock the mounts with M12 fixed bolt.