

JK 型彈簧式避震器安裝說明

JK spring isolator installation guide

安裝前，請確認避震器之型號規格是否正確。

Before installation, make sure the model and the specification are correct.

安裝說明

Installation guide

- 所需工具：公制口徑19mm (M12)、24mm (M16) 開口扳手、爪式千斤頂。

Required tools: 19mm (M12), 24mm (M16) open wrench and claw jack.

- 可先行放置與避震器高度相同的臨時木台於設備安裝處，再安裝設備。(如圖1)

Place the wooden panel in the same height as the isolator on the installation location before doing the installation process. (Fig 1).

- 依據基礎螺栓固定孔的位置，於安裝位置預埋基礎螺栓。

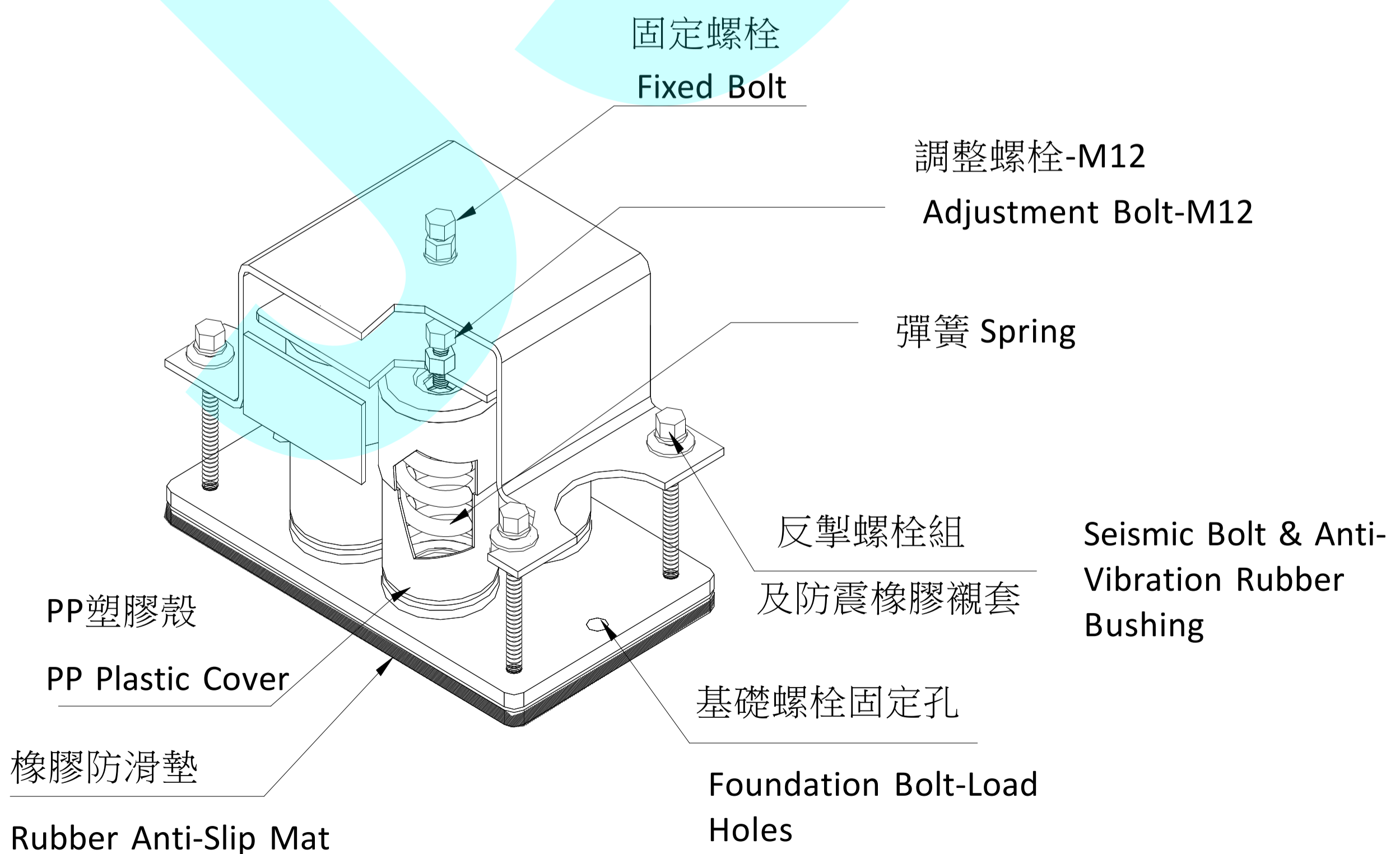
Embed foundation bolts according to the location of bolt-loaded holes.

- 將避震器放置於與設備的正確安裝位置。(如圖2)

Place the isolator on the correct installation location (Fig 2).

- 以M16固定螺栓將避震器與設備固定，但不鎖緊。(如圖3)

Fasten the isolator on the equipment with M16 fixed bolt instead of locking them (Fig 3).



JK 型彈簧式避震器安裝說明

JK spring isolator installation guide

- 臨時木台可取出後，使用公制口徑19mm開手扳手調整M12螺栓調整水平。(如圖4)

The wooden panel can be removed after adjusting M12 adjustment bolt in the anti-clockwise direction with 19mm open wrench to compress the spring to raise the iron sheet (Fig 4).

- 調整至避震器上蓋鐵上升至水平，即可停止調整。(如圖5)

Doing the adjustment until the upper iron sheet of the isolator being rise. Adjustment can be stopped once the wooden panel is removed (Fig 5).

- 將M16固定螺栓確實與設備鎖緊，和2側掣震螺栓鎖緊後即完成避震器安裝調整。(如圖6)

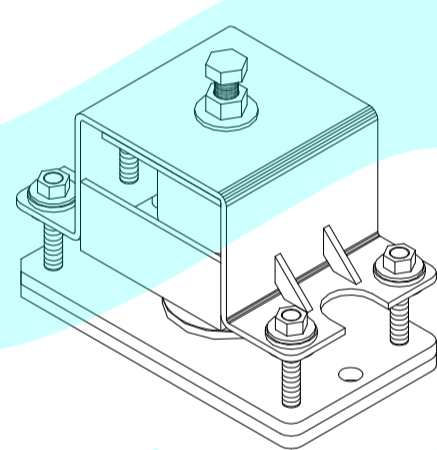
After the adjustment, lock the isolator with M16 fixed bolt and Seismic bolts on side (Fig 6).

- 安裝後請檢查彈簧之下壓量，安裝完成後之避震器高度若低於155mm，應予更換較大荷重之規格，並請洽本公司業務人員。

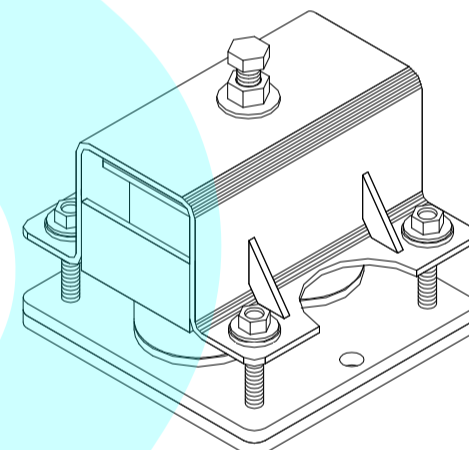
Please check the compression amount of the spring after the adjustment. If it shows insufficient of loading, please contact us to replace the larger loading type.

- 安裝時，請注意安全。

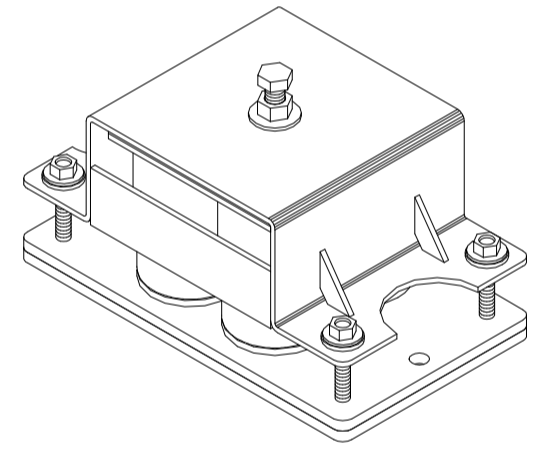
Be cautious during the installation.



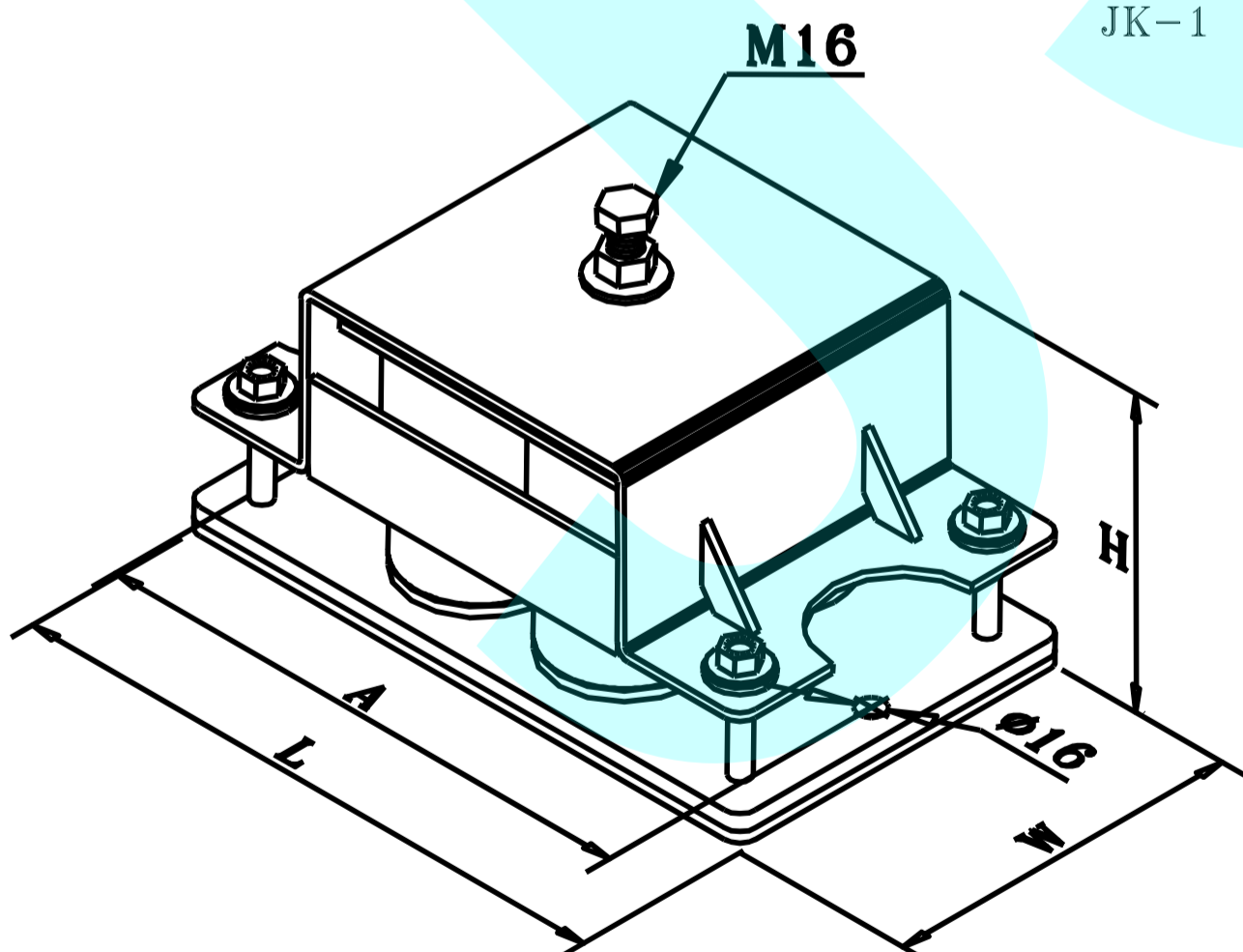
JK-1 TYPE



JK-2 TYPE



JK-4 TYPE



規格 Type	尺寸 Dimension (mm)			
	L	W	A	H
JK-1	260	140	230	185
JK-2	220	210	190	185
JK-4	360	210	320	185

※保養點檢項目：每月觀察固定螺栓保持鎖固、保持避震器安裝狀態 &彈簧下壓撓度正常。

Maintenance checking points: Keep the bolt fasten, isolator installation, and spring deflection stay in normal every month.

JK 型彈簧式避震器圖解說明 JK spring isolator illustration

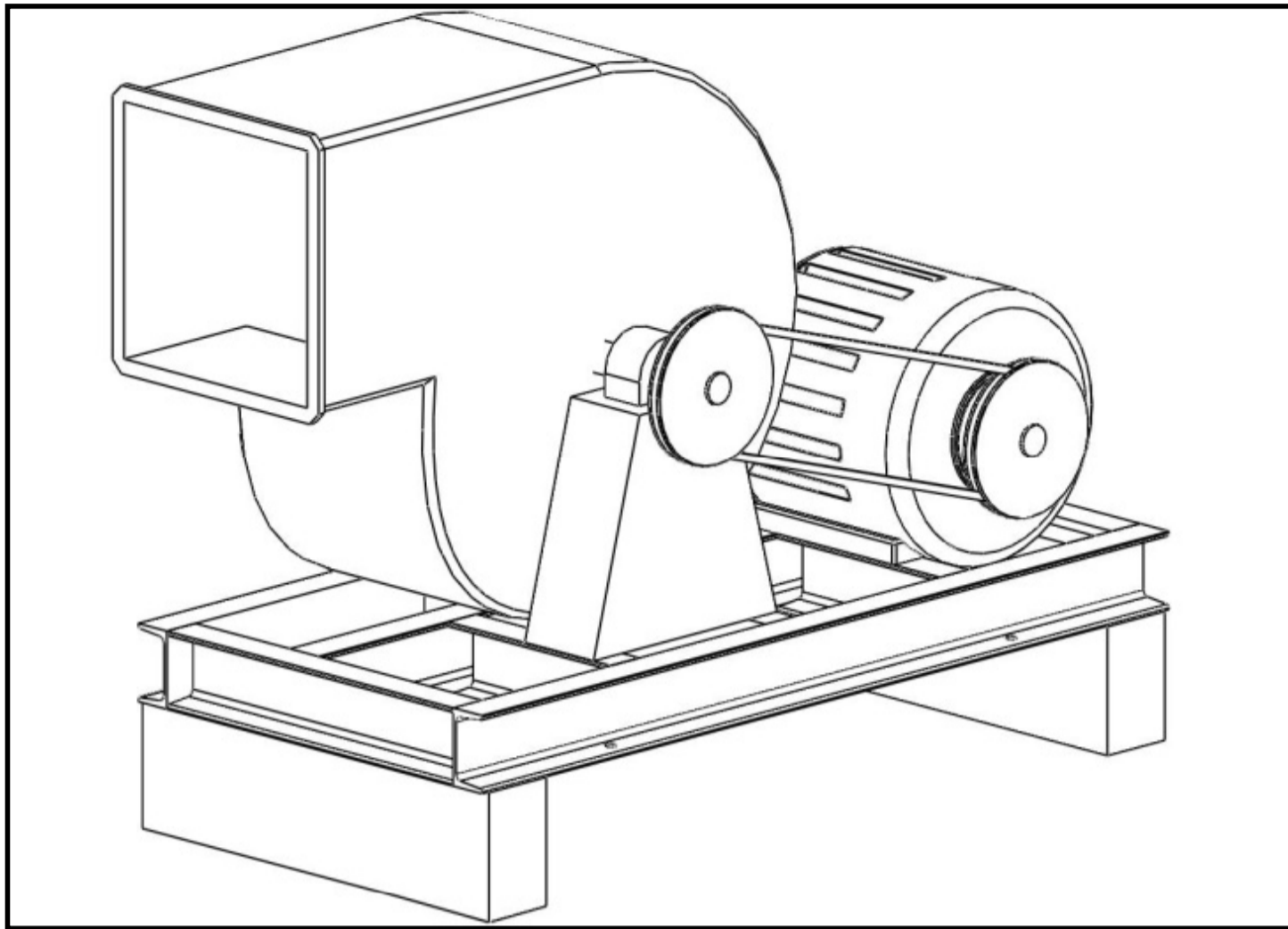


圖1) 安裝設備時可先放置與避震器相同高度之臨時木台。

Fig 1) Place the wooden panel in the same height as the isolator on the installation location before doing the installation process.

圖2) 將避震器置入設備預定安裝位置處。

Fig 2) Place the isolator on the correct installation location.

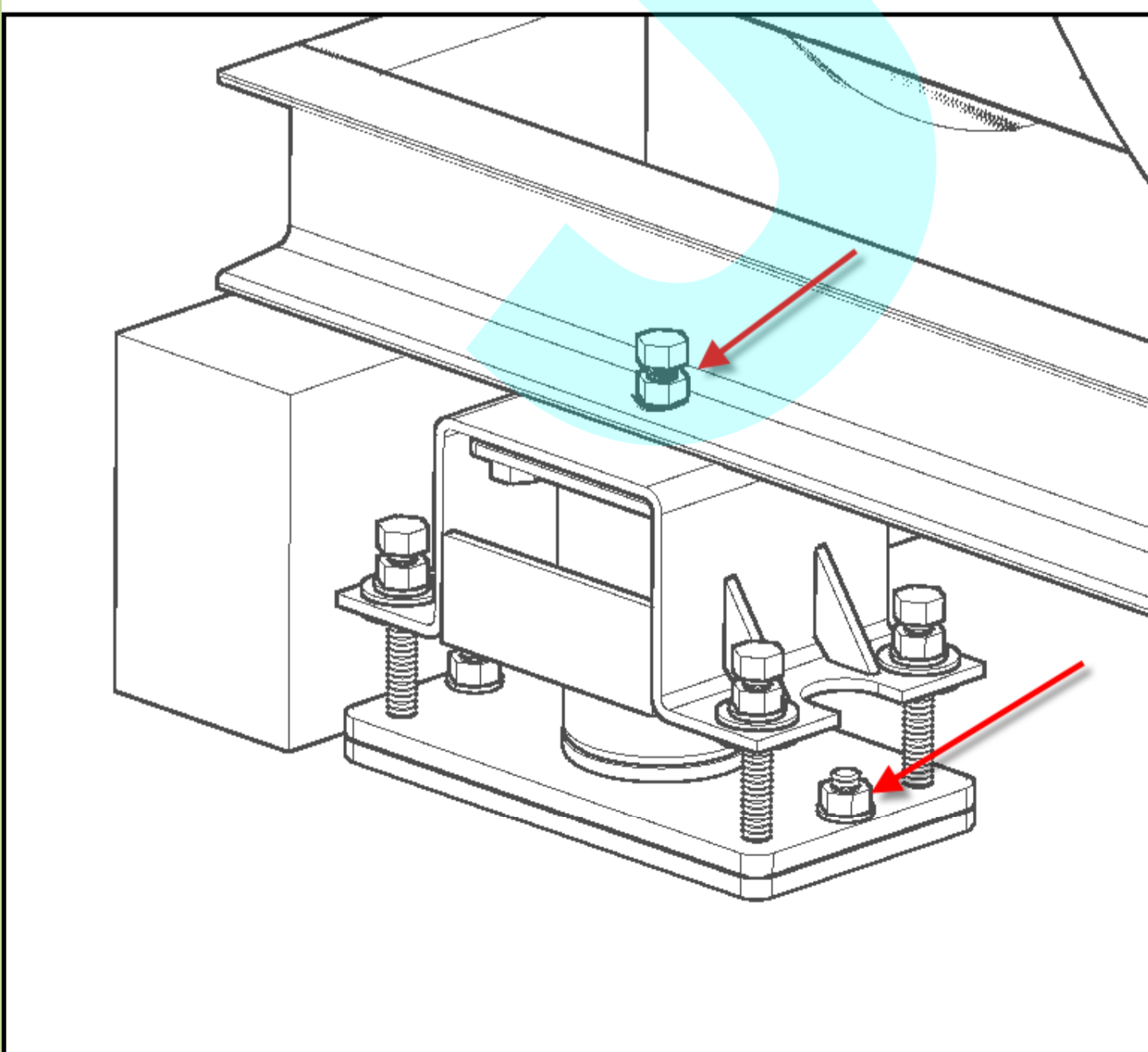
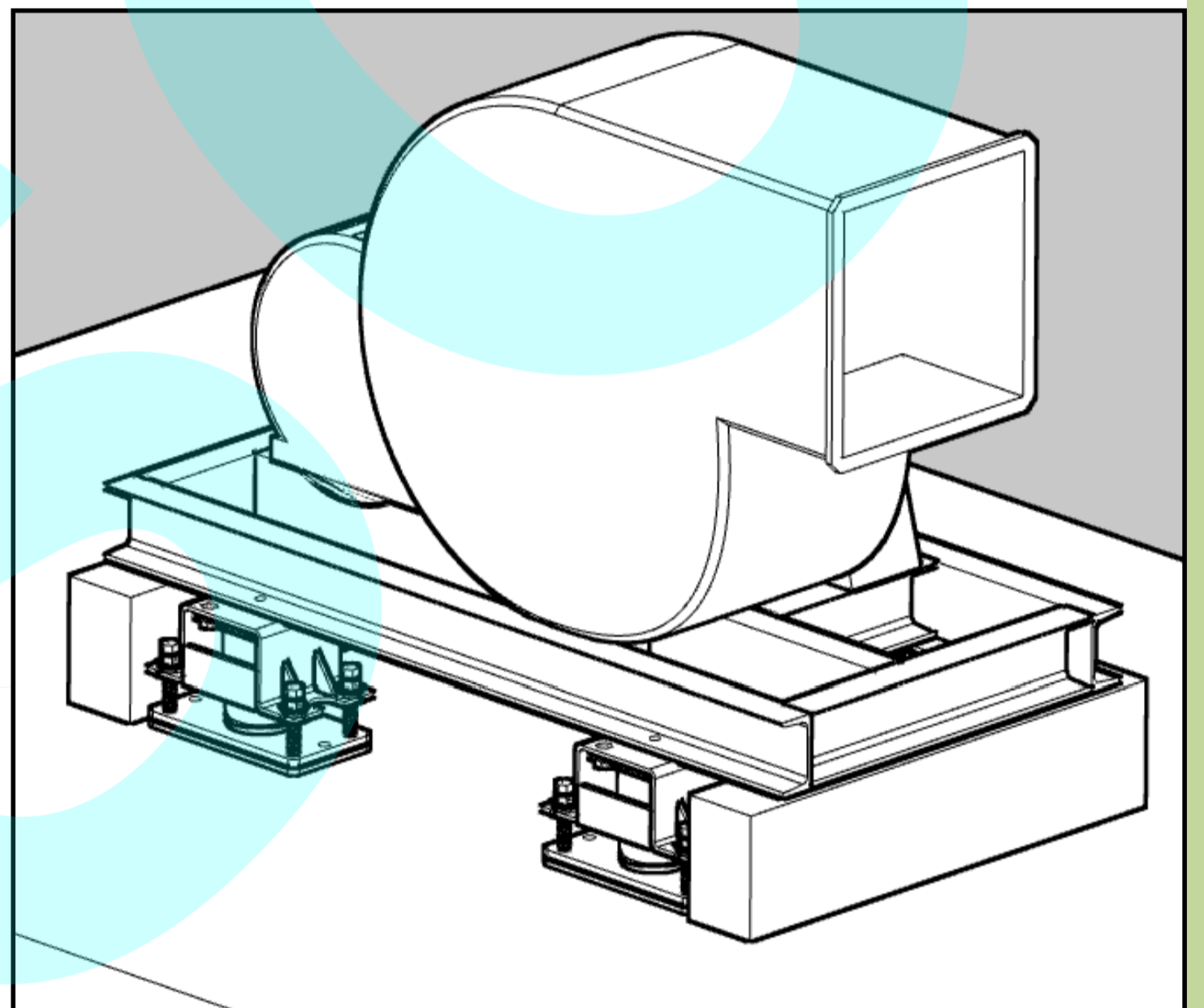
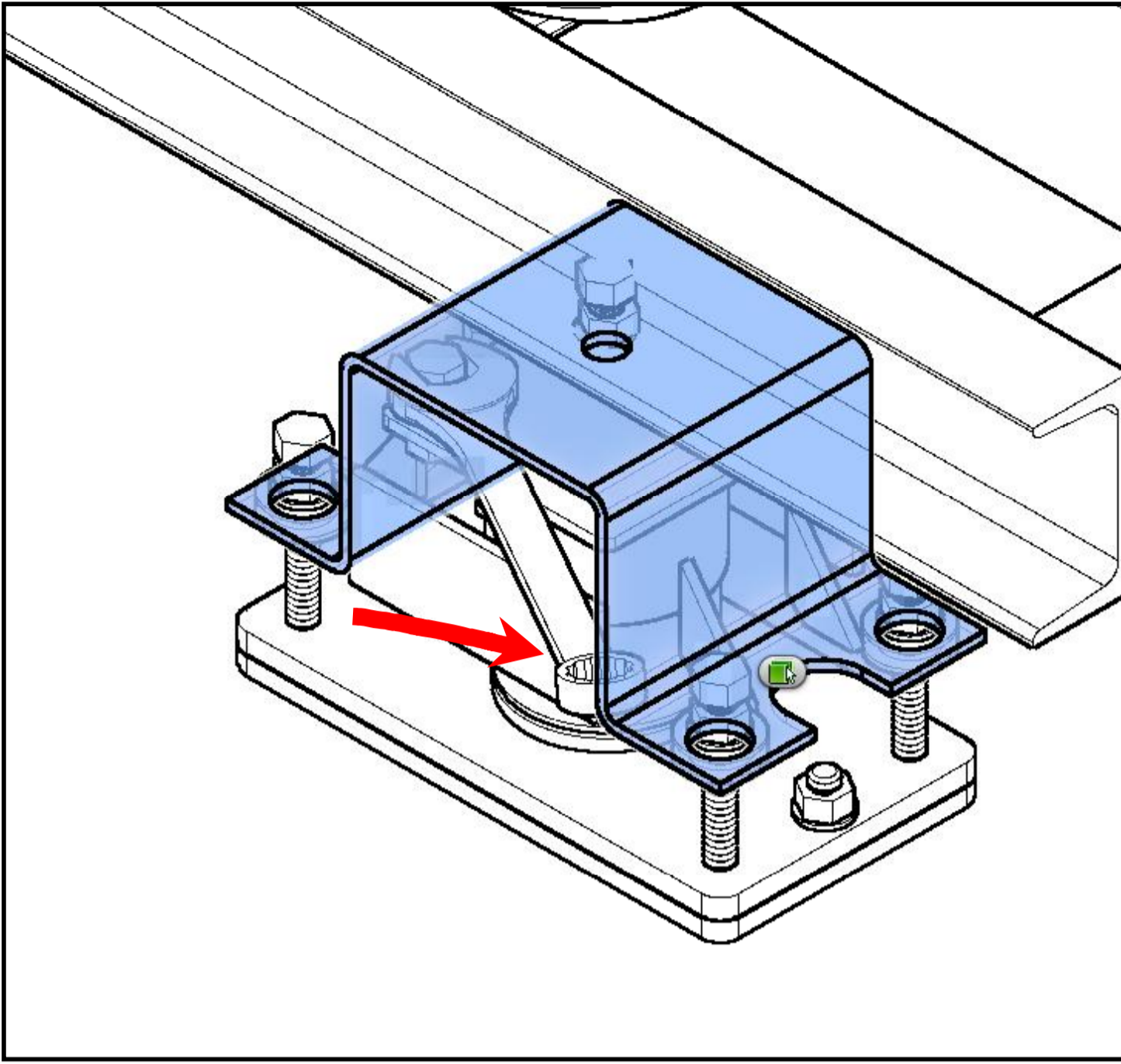


圖3) M16固定螺栓將避震器與基座固定，但不鎖緊。同時以基礎螺栓將避震器固定。

Fig 3) Fasten the isolator on the equipment with M16 fixed bolt instead of locking them. Moreover, to tie the isolator with the foundation bolt on the ground.

JK 型彈簧式避震器圖解說明 JK spring isolator illustration



•圖4)臨時木台可取出後，使用公制口徑19mm開手扳手調整M12螺栓調整水平。

(Fig 4) The wooden panel can be removed after adjusting M12 adjustment bolt with 19mm open wrench that with anti-clockwise direction to compress the spring to raise the iron sheet.

•圖5)調整至避震器上蓋鐵上升至水平，即可停止調整。

(Fig 5) Doing the adjustment until the upper iron sheet of the isolator being rise.

Adjustment can be stopped once the wooden panel is removed.

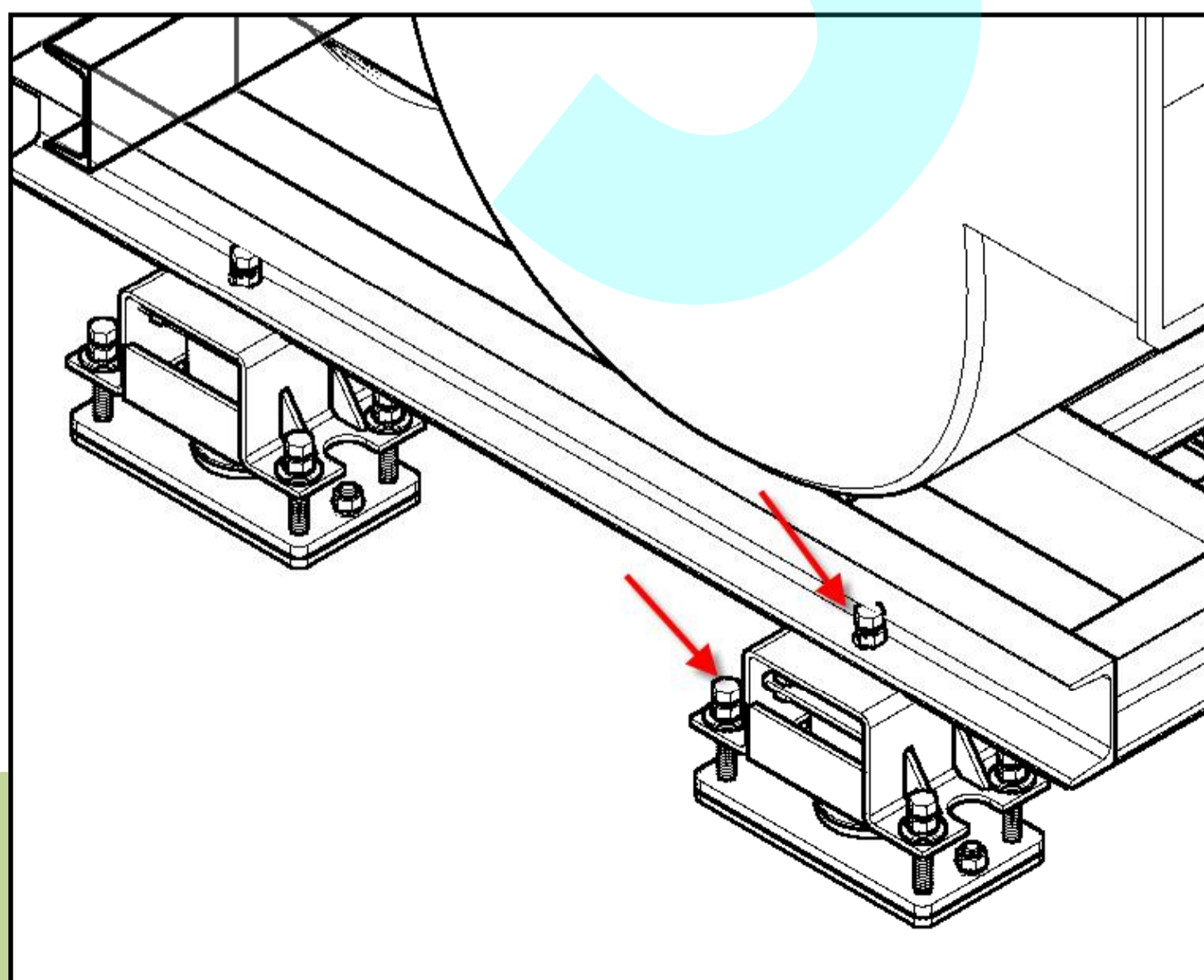
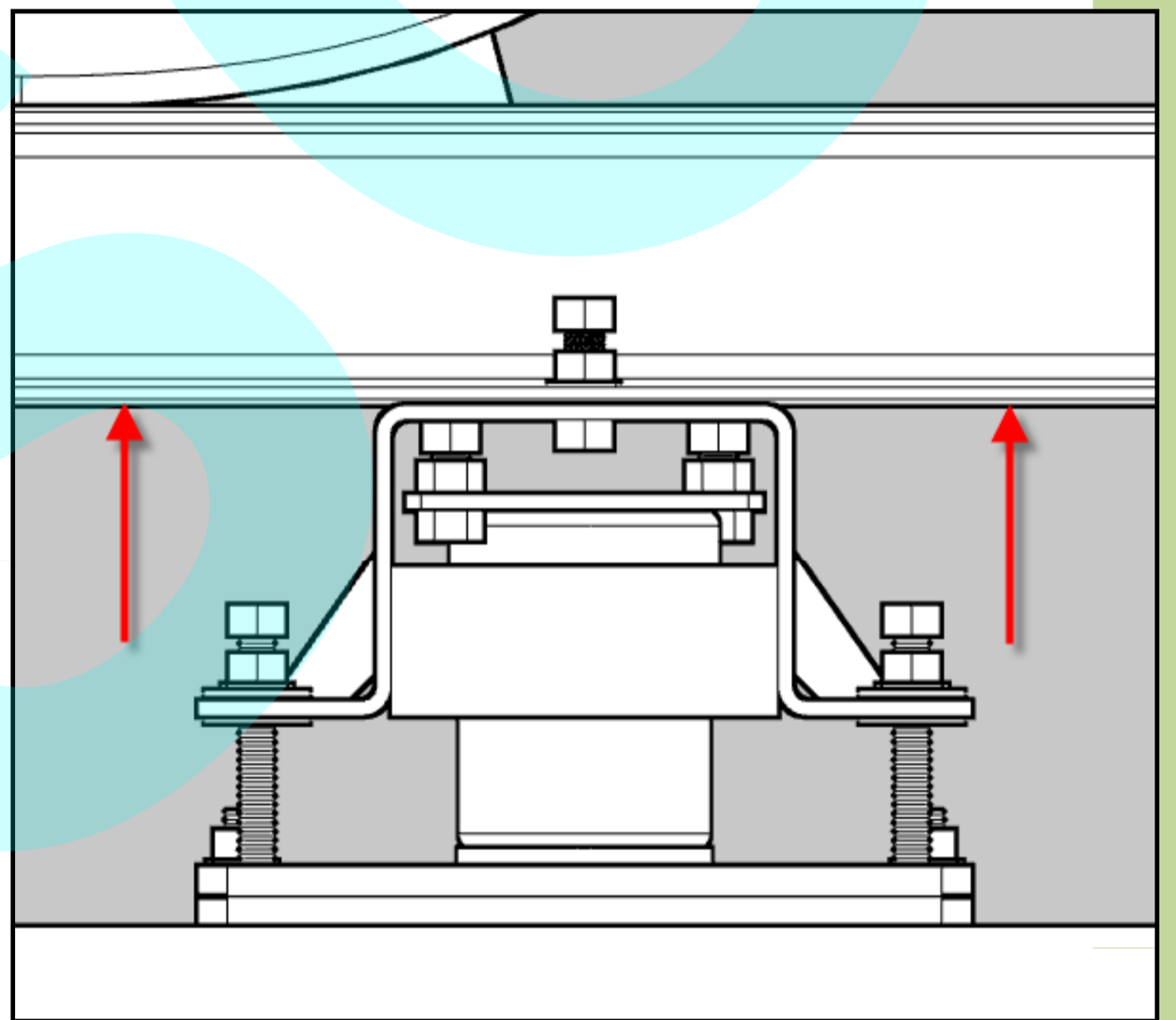


圖6) 將M16螺栓與設備完全鎖緊後，和2側掣震螺栓鎖緊後即完成避震器安裝調整。

Fig 6) After the adjustment, lock the isolator with M16 fixed bolt and Seismic bolts on side.