



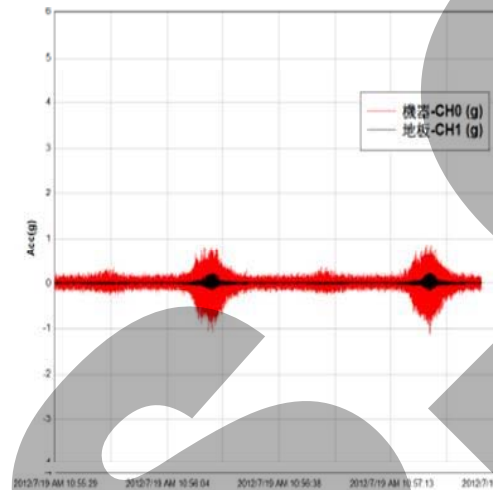
Installation Example

Installation place: 1F SC structure (B1 has Basement)

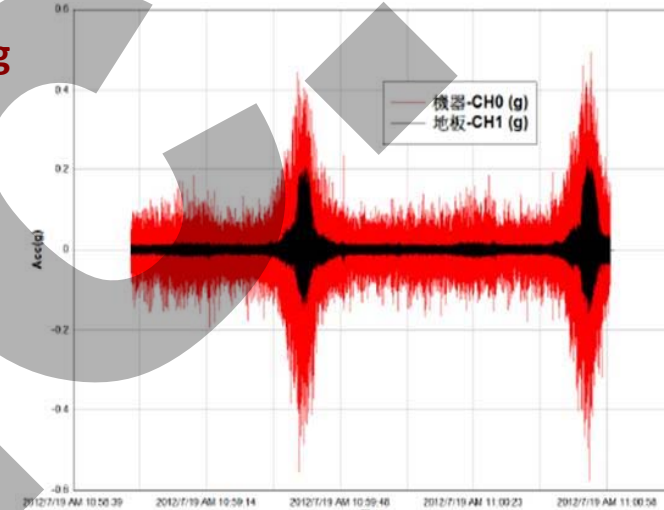
Machine: Spinning Machine **Vibration acceleration in Z-axis is 0.8g**

Unload RPM: 270 rpm

Isolator type: JN-180



Vibration acceleration in Y-axis is 0.45g



Vibration acceleration in X-axis is 4.5g

